

**Guilford County Schools**  
**Preliminary Results on Writing & EOG Math**  
**2007-08**

**Present to**  
**The Board of Education**

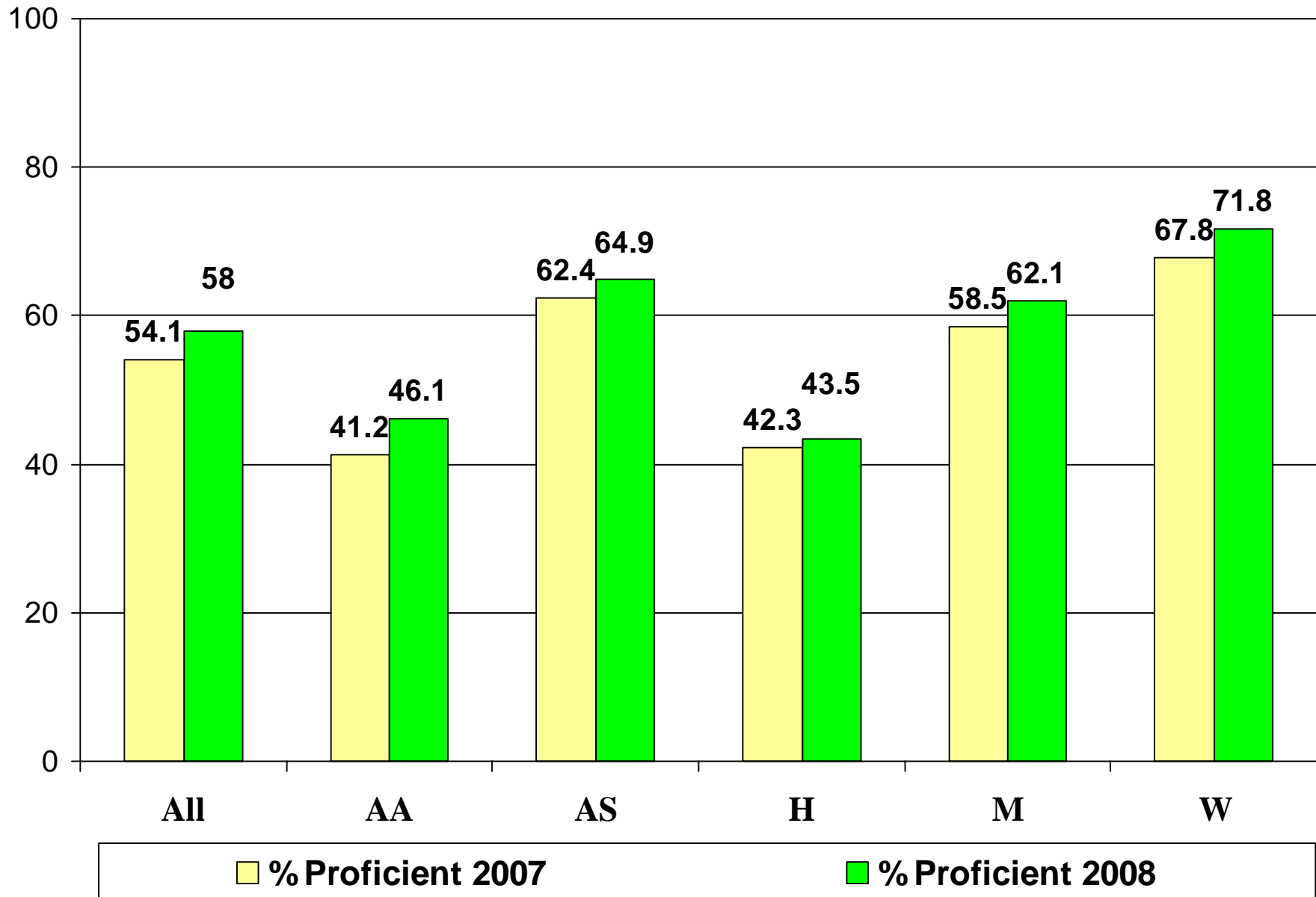
**Gongshu Zhang, Ed.D.**  
**Chief Accountability and Research Officer**  
**GCSNC**  
**June 10, 2008**

# Important Notes

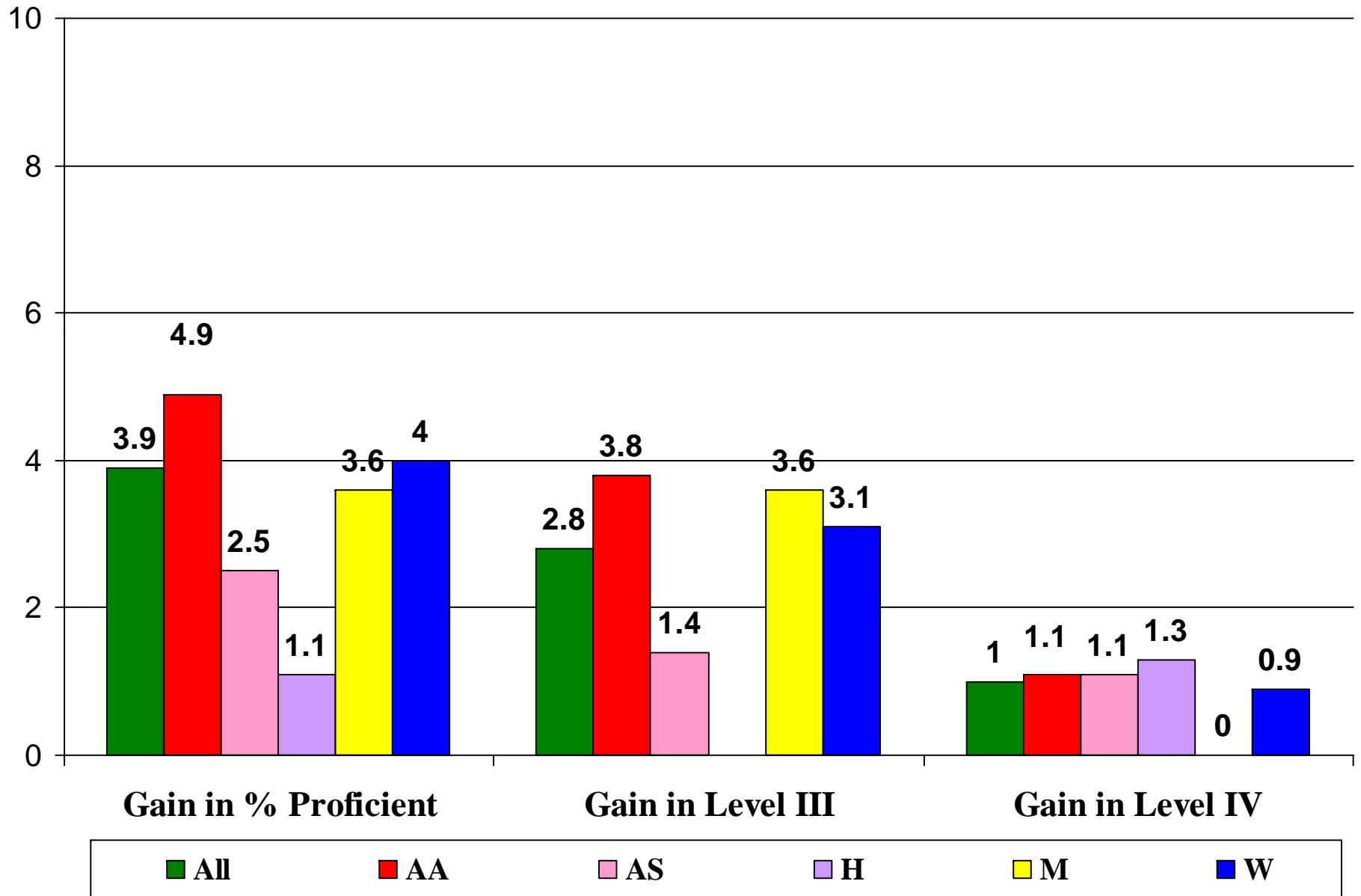
- **General writing test results are included. Alternative writing test results have not been available.**
- **In comparing to last year we received the EOG data about one month early.**
- **Regular multiple-choice item EOG math test results are included. Alternative math test results have not been available.**
- **Accurate student demo and SES data has not been available.**
- **When interpreting the results please pay attention to the measurement errors and the sampling errors.**

**Part I**  
**Very Preliminary Results for Regular Writing Tests**  
**by May 26, 2008**

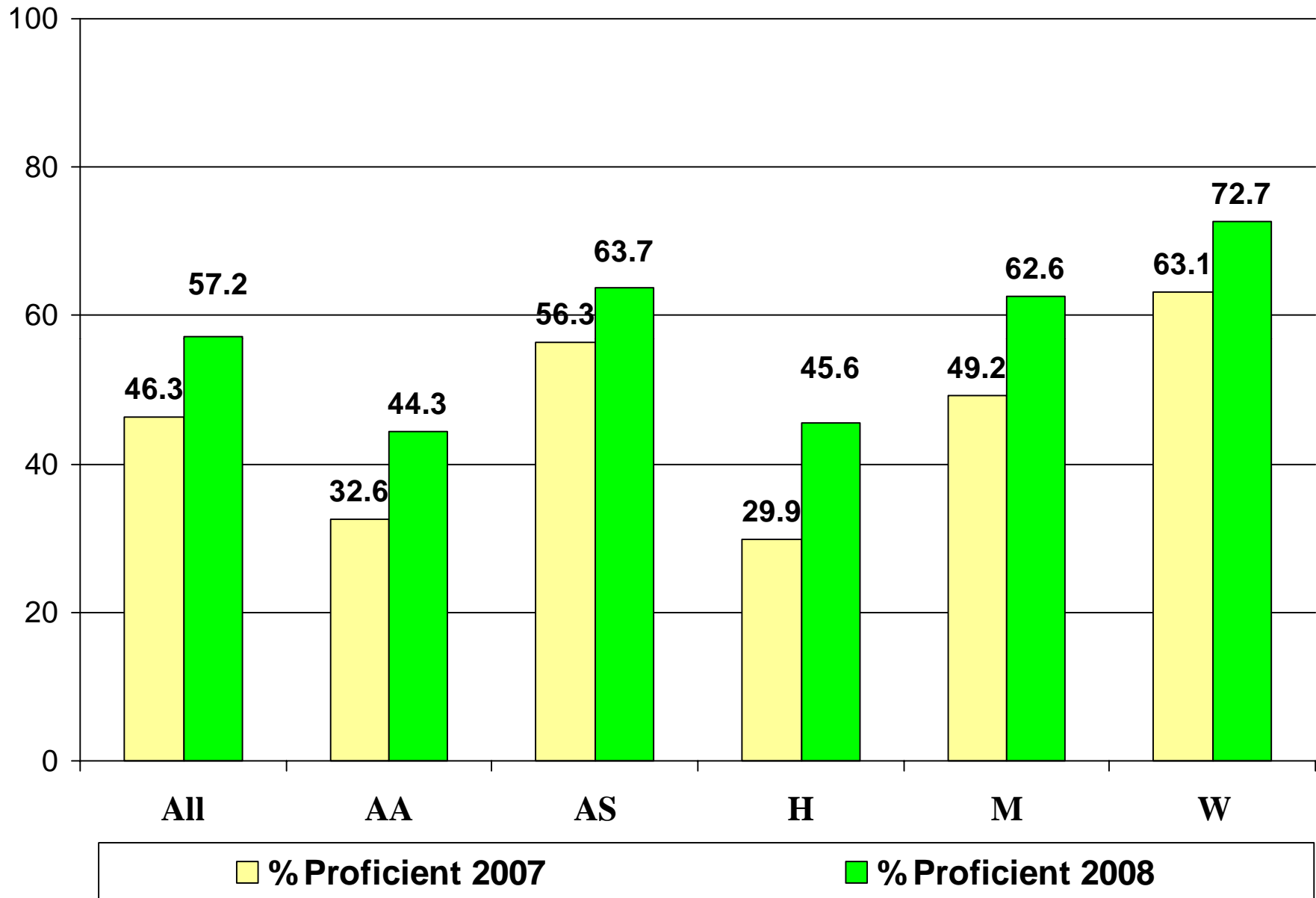
# GCS Grade 4 Students Regular Writing Test Result: 2008 vs. 2007



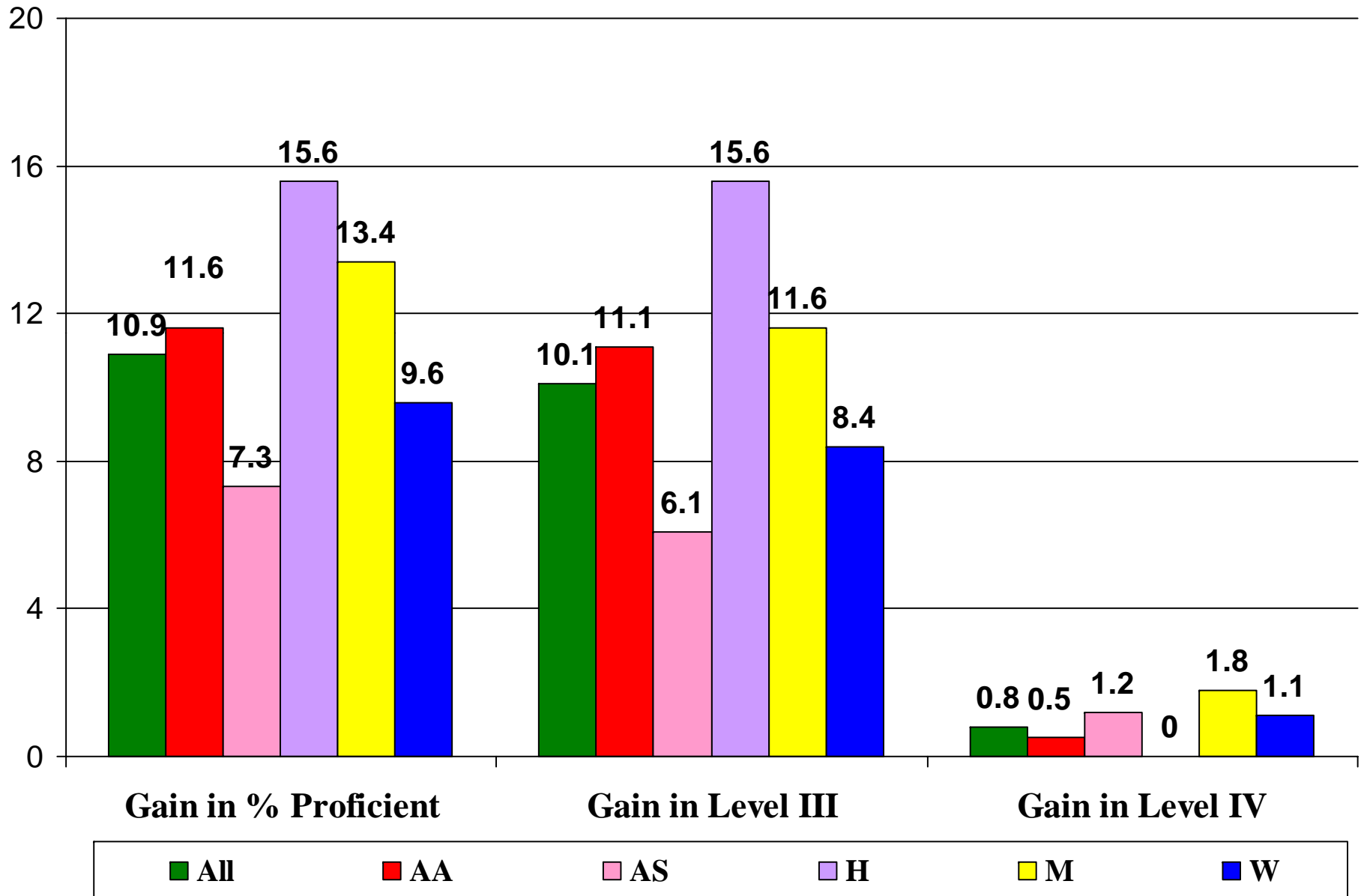
# GCS Grade 4 Students Regular Writing Test % Proficient Gain: 2008 vs. 2007



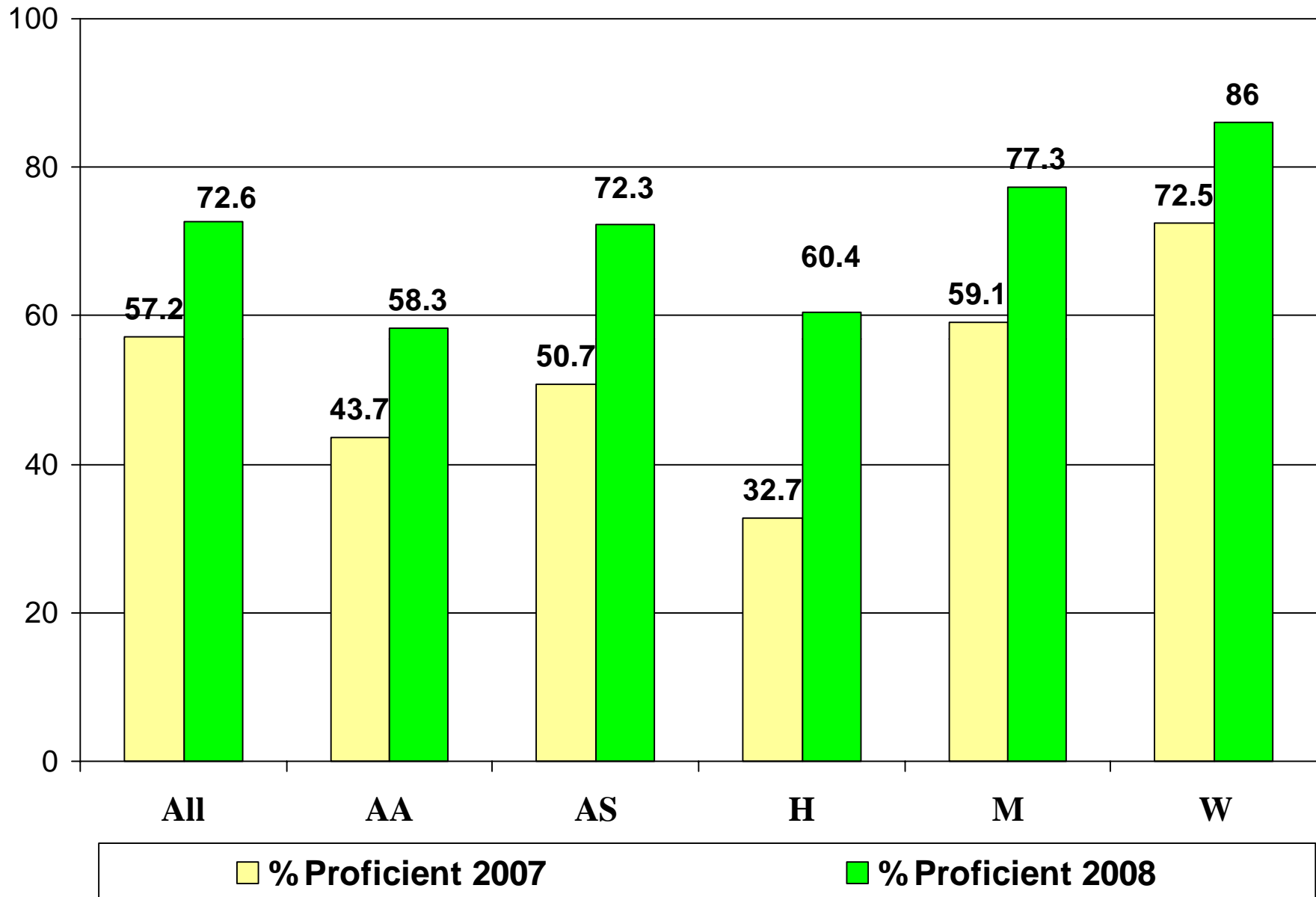
# GCS Grade 7 Students Regular Writing Test Result: 2008 vs. 2007



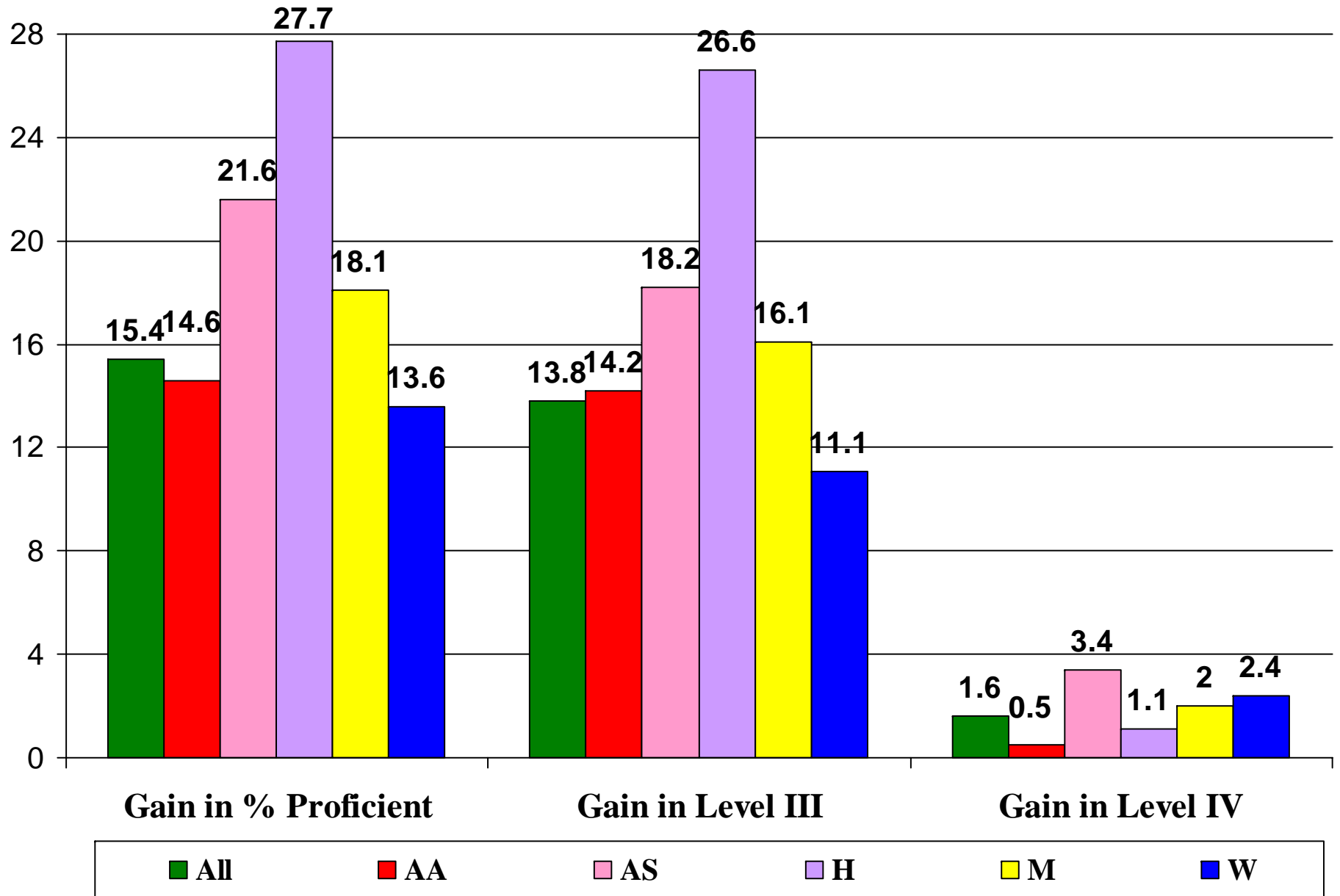
## GCS Grade 7 Students Regular Writing Test % Proficient Gain: 2008 vs. 2007



# GCS Grade 10 Students Regular Writing Test Result: 2008 vs. 2007

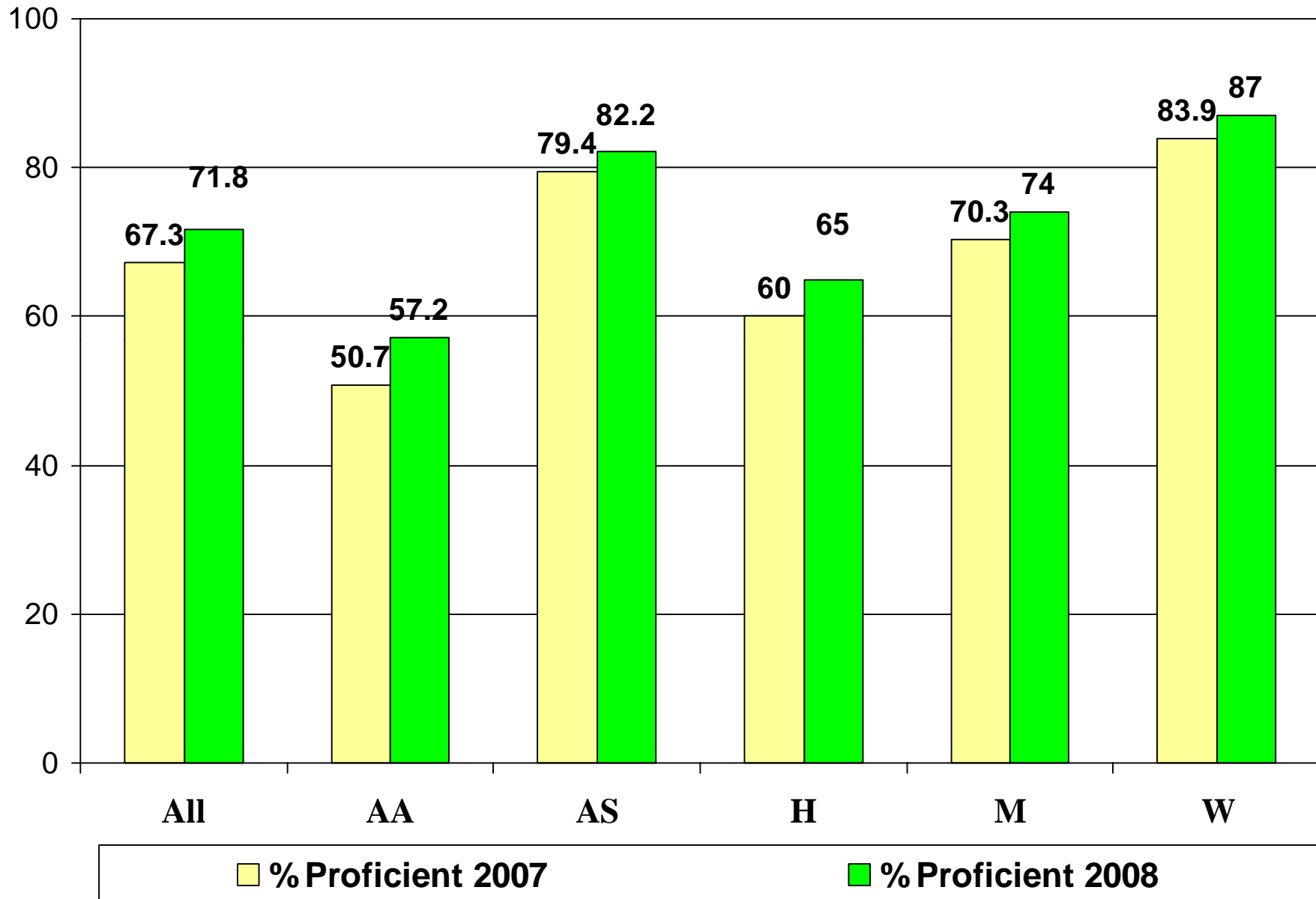


# GCS Grade 10 Students Regular Writing Test % Proficient Gain: 2008 vs. 2007

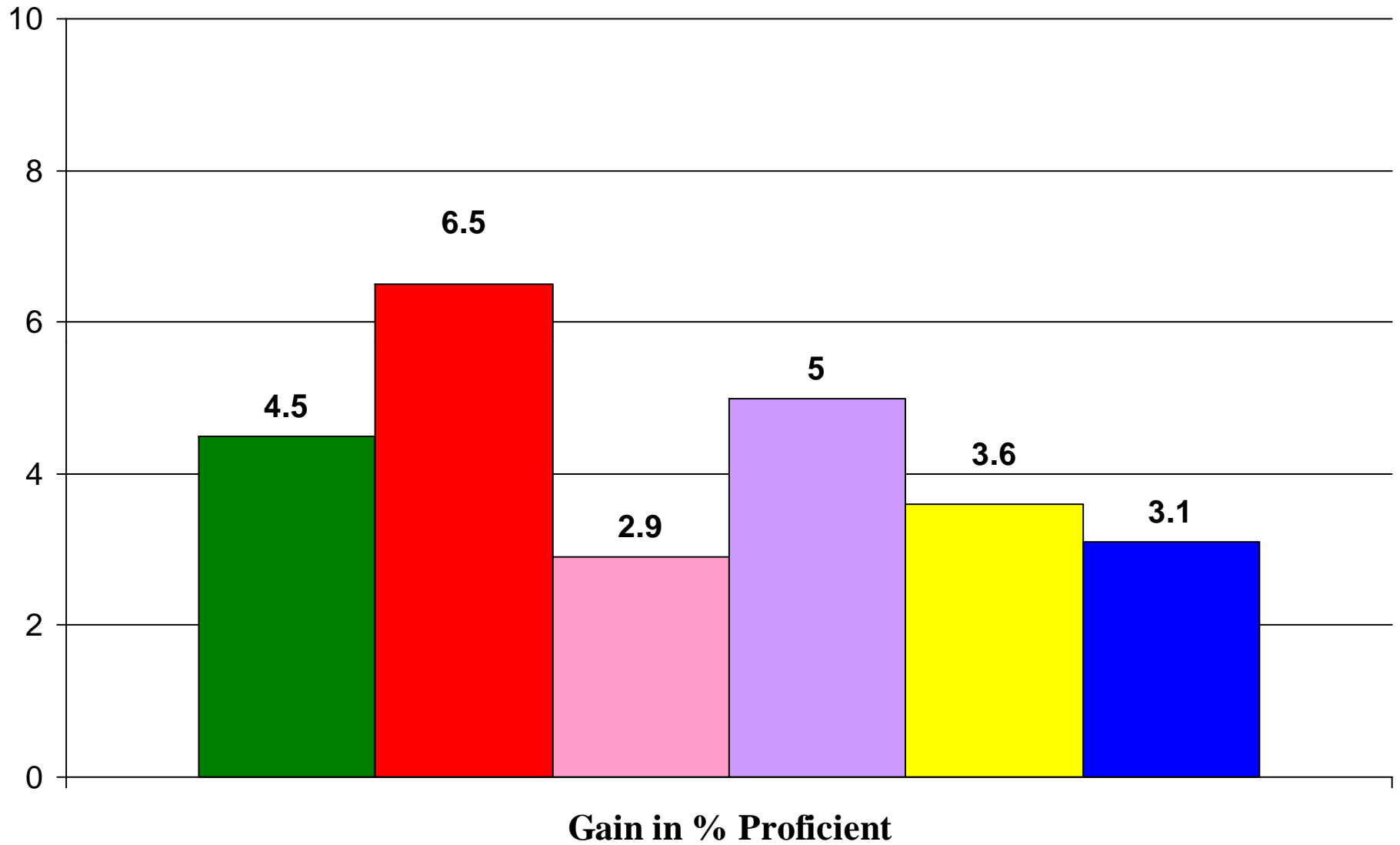


**Part II**  
**Very Preliminary Results for Regular EOG Math**  
**by May 29, 2008**

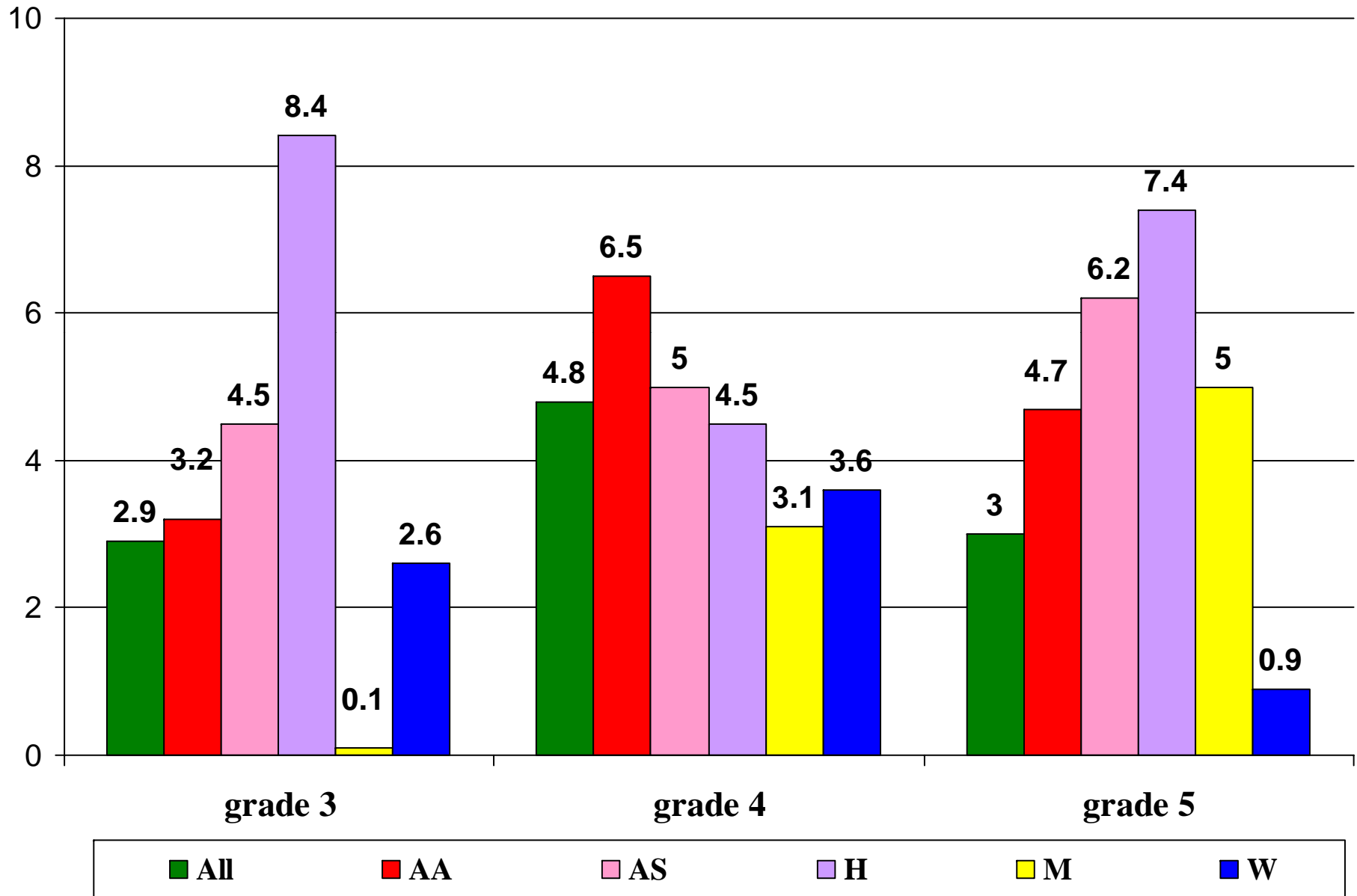
## GCS Grades 3 to 8 EOG Math Test Result: 2008 vs. 2007



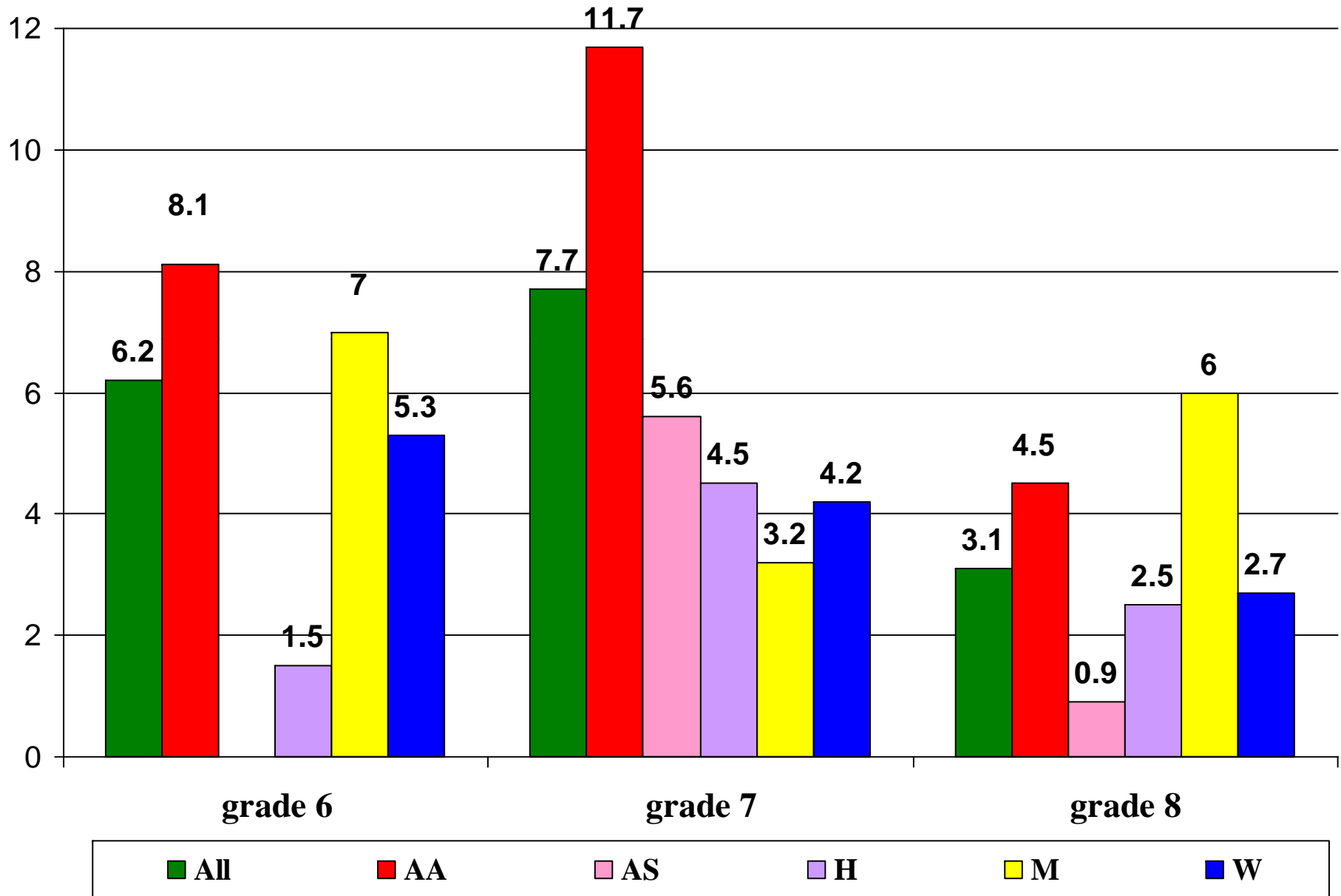
# GCS EOG Math – Grades 3 to 8: % Proficient Gain: 2008 vs. 2007



## GCS EOG Math – Elementary Schools: % Proficient Gain: 2008 vs. 2007



## GCS EOG Math – Middle Schools: % Proficient Gain: 2008 vs. 2007



**When interpreting the results  
please pay attention to  
measurement errors  
and  
sampling errors**

## 2008 EOG Math Multiple Choice Item Tests Result by 5/29/2008

All alternative test data is not available

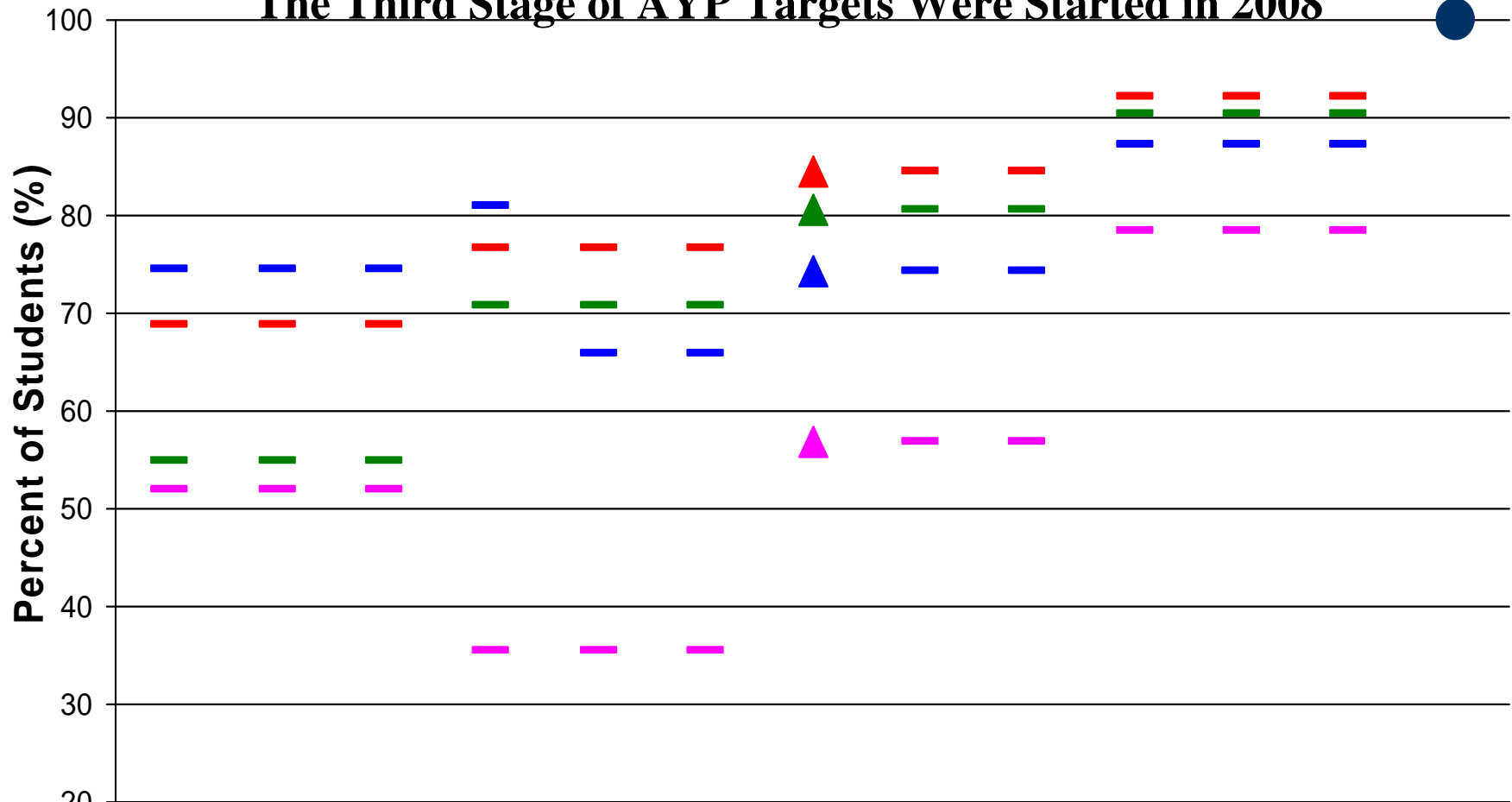
grade	ethnic	mean score			% proficient			cohort gain
		2007	2008	dif=08-07	2007	2008	dif=08-07	
3	All	345	345	.5	71.7	74.5	2.9	2.2 4.4 1.4 4.1 5.9
4	All	350	351	1.2	69.1	73.9	4.8	
5	All	356	356	.8	70.5	73.5	3.0	
6	All	356	358	1.9	65.7	71.9	6.2	
7	All	358	359	1.8	62.0	69.8	7.7	
8	All	360	361	.7	64.8	67.9	3.1	

**Part III**  
**NC Raises Standards Further**  
**We Are Still Facing Very Tough AYP Situation**

**Change 1**  
**Raise Proficiency Standards**  
**for EOG Reading and Other EOCs in 2008**

## Change 2

The Third Stage of AYP Targets Were Started in 2008



	2001-02	2002-03	2003-04	2004-05	2005-06	2006-07	2007-08	2008-09	2009-10	2010-11	2011-12	2012-13	2013-14
- EM_R	68.9	68.9	68.9	76.7	76.7	76.7	84.5	84.5	84.5	92.2	92.2	92.2	100.0
- EM_M	74.6	74.6	74.6	81	65.8	65.8	74.4	74.4	74.4	87.2	87.2	87.2	100
- H_R	52	52	52	35.4	35.4	35.4	56.9	56.9	56.9	78.5	78.5	78.5	100
- H_M	54.9	54.9	54.9	70.8	70.8	70.8	80.5	80.5	80.5	90.3	90.3	90.3	100