

Special Interest Articles

Upgraded for Success

The Value of Value Added Data

Department Highlights

Upcoming Events	2
MP Vacancies	2
FAQ's	2
Course Offerings	3
PD Requirements	3
Contact Information	3

We're on the Web!

See us at:

http://www.qcsnc.com/depts/mission_possible/index.htm



Upgraded for Success

High School math teachers will be receiving a little something extra this holiday season! Grant and foundation dollars have just been allocated to upgrade all Mission Possible/ Cumulative Effect math classrooms into 21st century interactive learning environments.

This month, a total of 76 high school math classrooms will receive comprehensive technology packages that will enable them to make their classrooms fully interactive

using the most advanced technologies available. Each classroom will be outfitted with an interactive Promethean whiteboard, LCD projector, interactive response system to monitor student understanding throughout the lesson, a Bluetooth slate that allows the teacher and students to move throughout the classroom while writing on the interactive whiteboard, a document camera, and online curriculum resources designed to integrate all technologies.



The provision of these instructional and learning resources came as a result of teachers learning about the impact of these technologies in their 2007 Summer Math Institute and requesting that the tools be made available to them. Teacher teams will utilize their new tools to work in teams developing interactive learning experiences for student success!

The Value of Value Added Data

You've received your Value Added Data report—now what? How is this report of any value to you as a teacher?

Value Added Data is different than any other performance measure in that it compares a student's predicted performance to his or her actual performance. The difference between the two numbers represents the value a teacher added to that student's performance. The prediction formula takes into account multiple

factors for each student including but not limited to: gender, exceptionality, income, race, and prior achievement.

A teacher's Value Added Data is determined by taking qualifying student scores (students must have attended a full academic year, taken the standard EOG or EOC, and have three or more prior data points in order to be included) and comparing them to the students' predicted scores. The outcome of that comparison yields one of

three results when the teacher's effect is compared to the mean effect of other GCS teachers in the same subject area: Above, Below, or No Detectable Difference (NDD). Using the Value Added Data determination, a teacher can compare their performance to all other teachers. Knowing that each student's individual circumstances are accounted for, a teacher can rest assured that the data is a true reflection of their own performance.

Upcoming Events

December 2007 Events

- 4 Cooperative Learning, 8:30-3:30*
- 5 Differentiated Instruction, 8:30-3:30*
- 6 Differentiated Instruction, 8:30-3:30*
- 6 Cumulative Effect Seminar Session, 4:30-6:30
- 11 Cumulative Effect Steering Committee, UNCG
- 12 SERVE Evaluation Team Meeting
- 15 USDOE Annual Performance Report Due
- 18 Federal Evaluation Teleconference

* Only the start dates are listed for multi-day workshops

MP Vacancies

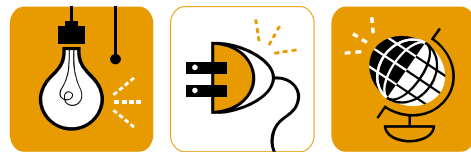
Do you know someone who would like to work in a Mission Possible School? Send them the following vacancies and have them contact Amy Holcombe at 336-335-3294:

Allen Middle School, 7th Grade Math

Aycock Middle School, 8th Grade Language Arts

Ferndale Middle School, 8th Grade Algebra I

Welborn Middle School, 8th Grade Language Arts



Frequently Asked Questions

I am a math teacher making a \$2,500 recruitment incentive. How can I earn the \$9,000 recruitment incentive like some of my colleagues?

The grant guidelines state that a math teacher who holds a degree in math or 24 content hours in math, with a C or above, is eligible to receive a \$9,000 recruitment incentive each year. When teaching Algebra I, the incentive increases to \$10,000. Teachers wanting to increase their incentive can take additional math courses online, face-to-face, or, if you are a high school teacher, through the Cumulative Effect Summer Math Institute. Each semester, Barbara Campbell reviews newly submitted transcripts in order to insure the accuracy of incentives paid.

If I am a K-2 teacher but would like to teach 3-5 to be eligible for the performance incentive, how do I do that?

First, make sure that you are licensed to teach in grades 3-5. Then, let your principal know that you would be interested in teaching at a higher grade level. Each semester, position assignments are reviewed for the purpose of determining incentives. If you move into a 3rd-5th position, you will sign a new contract that covers any performance incentive you might receive.

I don't want to miss student days to fulfill my Mission Possible professional development requirements. Are there any evening or weekend workshops?

Yes! Several new evening and weekend workshops have been added. Check out our course offerings for information on new times and dates.

*Recruiting
and
retaining
the best!*

Course Offerings

Cooperative Learning Sessions (Multi-Day)

12/4/07, 8:30-3:30, Organizational Development
 1/14/08, 6:00-9:00, Organizational Development
 2/5/08, 8:30-3:30, Organizational Development
 3/4/08, 6:00-9:00, Organizational Development
 4/5/08, 8:30-3:30, Organizational Development
 4/15/08, 8:30-3:30, Organizational Development

Anti-Racism Sessions (Multi-Day)

1/11/08, 8:00-3:00, Eugene PTA Room
 2/8/08, 8:00-3:00, Eugene PTA Room
 3/19/08, 8:00-3:00, Eugene PTA Room
 4/18/08, 8:00-3:00, Eugene PTA Room

Differentiated Instruction (Multi-Day)

12/5/07, 8:30-3:30, Organizational Development
 12/6/07, 8:30-3:30, Organizational Development
 1/12/08, 8:30-3:30, Organizational Development
 2/6/08, 8:30-3:30, Organizational Development
 4/16/08, 8:30-3:30, Organizational Development

Cumulative Effect Seminar Series for December

12/6/07, Foldables, 4:30-6:30, Dudley High School

Register at:

<http://www.solutionwhere.com/quilford/cw/CourseByAlpha.asp>

Professional Development

Year 1 Participants:

Cooperative Learning
 Anti-Racism

Year 2 Participants:

Differentiated Instruction
 TESA

Cumulative Effect Participants:

Anti-Racism
 Cumulative Effect Seminar Series

*All workshops
 must be
 completed by
 June 30, 2008*



Contact Information

Amy Holcombe, Ph.D.

Mission Possible Director

(336) 335-3294 x5016

holcoma@gcsnc.com

Wynde Brady

Data Manager

(336) 335-3294 x5015

bradys@gcsnc.com

Tracey Howell

CE Project Manager

(336) 202-4860

thowell@uncg.edu

Holli Bayonas, Ph.D.

Evaluation Specialist

(336) 315-7438

hgottsch@serve.org