



**Guilford  
County Schools**

**STRIVING. ACHIEVING. EXCELLING.**

**2009 Preliminary EOG & EOC Data**

**July 7, 2009**



# Changes in Reporting This Year

- ▶ EOG and EOC tests had completed its 3-year period re-norming by 2008
- ▶ This data is preliminary only
- ▶ Final DPI results may change slightly
- ▶ EOG retest 1 scores are being included for the first time in state accountability system
- ▶ EOC retest 1 scores aren't included this year
- ▶ The percent proficient is used in this report

# Part One

## »» Preliminary EOG Results 2009

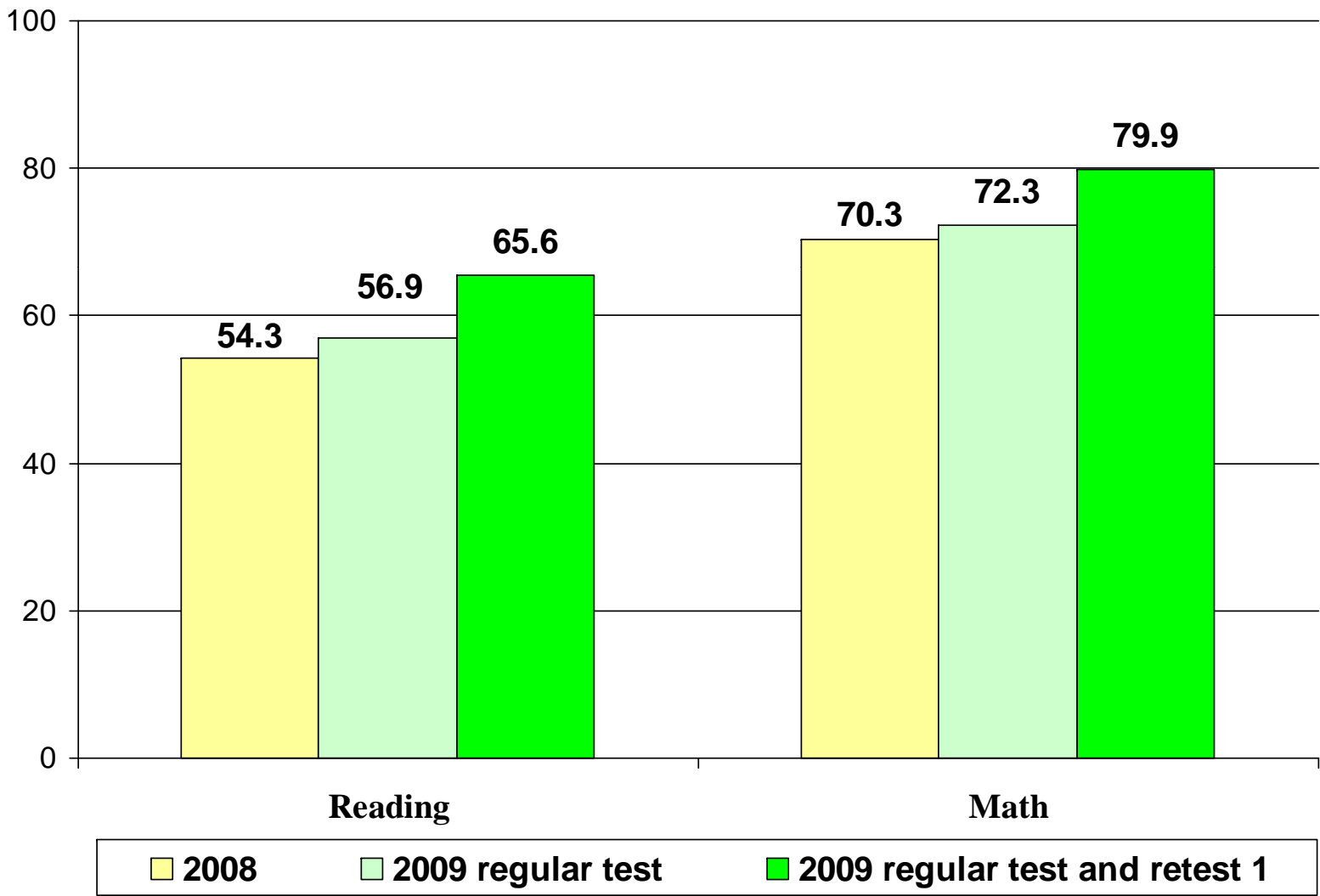
# Overview of 2009 EOG Results

- ▶ Reading and math scores increased at all grade levels, 3-8
- ▶ District-wide reading = 11.3 percentage point gain
- ▶ District-wide math = 9.6 percentage point gain
- ▶ District-wide science = 13.4 percentage point gain for grade 5
- ▶ District-wide science = 10.1 percentage point gain for grade 8

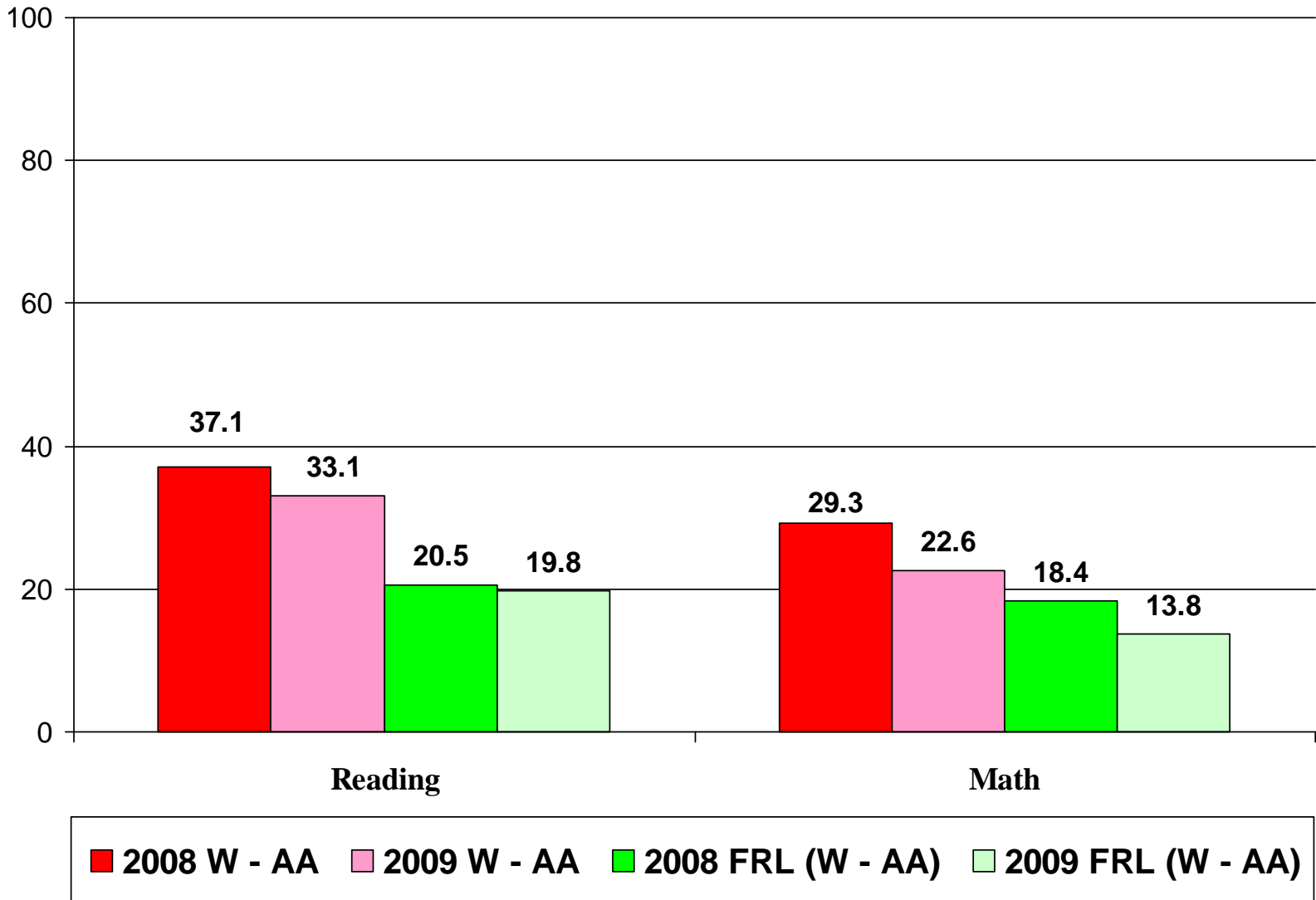
# More on preliminary EOG info

- ▶ 87 of 89 elementary and middle schools made positive gains in composite of reading and math
- ▶ 49 elementary and middle schools = > 10 percentage point gains
- ▶ 11 elementary and middle schools = > 15 percentage point gains in reading and math
  - Kirkman Park, Triangle Lake, Guilford, Brightwood, Cone, Erwin, Bessemer, Sumner and Vandalia elementary schools; Ferndale and Allen middle schools
- ▶ Achievement gap between African-American and white students has narrowed

# EOG Results as Measured by Percent Proficient: 2008 vs. 2009



# Achievement Gap Size: 2008 vs. 2009



# 2009 EOG Reading by Grade

Group	Grade	2008	2009				Number Tested		
		% Prof.	Regular		Regular & Retest 1		2009		2008
			% Prof.	Gain: 08-09	% Prof.	Gain: 08-09	Total	Retest 1	Total
All	all	54.3	56.9	<b>2.6</b>	65.6	<b>11.3</b>	32597	11294	32482
All	3	52.1	55.2	<b>3.1</b>	63.7	<b>11.6</b>	5605	1964	5443
All	4	55.8	56.2	<b>.4</b>	64.1	<b>8.3</b>	5403	1874	5504
All	5	54.4	56.3	<b>1.9</b>	66.0	<b>11.6</b>	5523	2042	5337
All	6	61.0	61.7	<b>.8</b>	70.6	<b>9.6</b>	5333	1585	5231
All	7	52.0	56.6	<b>4.5</b>	65.8	<b>13.7</b>	5303	1838	5190
All	8	51.2	55.5	<b>4.3</b>	63.4	<b>12.2</b>	5430	1991	5500

# 2009 EOG Reading Results by Group

Group	Grade	2008	2009				Number Tested		
		% Prof.	Regular		Regular & Retest 1		2009		2008
			% Prof.	Gain: 08-09	% Prof.	Gain: 08-09	Total	Retest 1	Total
All	all	54.3	56.9	<b>2.6</b>	65.6	<b>11.3</b>	32597	11294	32482
AA	all	37.6	40.7	<b>3.1</b>	50.7	<b>13.1</b>	13489	6393	13503
AI	all	49.7	55.0	<b>5.3</b>	61.3	<b>11.6</b>	160	52	161
AS	all	57.8	59.7	<b>2.0</b>	67.1	<b>9.3</b>	1702	517	1733
H	all	38.8	42.9	<b>4.1</b>	52.6	<b>13.8</b>	2885	1291	2786
M	all	56.7	59.5	<b>2.7</b>	68.4	<b>11.6</b>	1697	560	1563
W	all	74.7	76.6	<b>2.0</b>	83.8	<b>9.2</b>	12664	2481	12723

# 2009 EOG Reading Results by Status

Group	Grade	2008	2009				Number Tested		
		% Prof.	Regular		Regular & Retest 1		2009		2008
			% Prof.	Gain: 08-09	% Prof.	Gain: 08-09	Total	Retest 1	Total
non FRL	all	71.6	74.3	<b>2.7</b>	81.8	<b>10.2</b>	16000	3531	16292
FRL	all	36.9	40.2	<b>3.3</b>	49.9	<b>13.1</b>	16597	7763	16140
non LEP	all	56.6	59.5	<b>2.9</b>	68.1	<b>11.6</b>	30059	9917	29622
LEP	all	21.8	26.8	<b>5.0</b>	35.3	<b>13.5</b>	2538	1377	2249
non SWD	all	58.9	61.8	<b>2.9</b>	70.4	<b>11.5</b>	26731	8480	27620
SWD	all	28.0	30.2	<b>2.2</b>	39.5	<b>11.5</b>	4915	2492	4812

# 2009 EOG Math Results by Grade

Group	Grade	2008	2009				Number Tested		
		% Prof.	Regular Test		Regular & Retest 1		2009		2008
			% Prof.	Gain: 09-08	% Prof.	Gain: 09-08	Toatl	Retest 1	Total
All	all	70.3	72.3	<b>2.0</b>	79.9	<b>9.6</b>	32655	7498	32503
All	3	72.8	73.3	<b>.5</b>	80.5	<b>7.7</b>	5621	1228	5416
All	4	71.7	72.9	<b>1.2</b>	80.0	<b>8.3</b>	5409	1198	5484
All	5	71.6	73.1	<b>1.5</b>	80.0	<b>8.4</b>	5534	1277	5356
All	6	70.8	70.6	<b>-.2</b>	79.1	<b>8.4</b>	5337	1315	5251
All	7	68.9	72.6	<b>3.6</b>	79.7	<b>10.8</b>	5307	1194	5203
All	8	66.5	71.3	<b>4.8</b>	80.2	<b>13.7</b>	5447	1286	5517

# 2009 EOG Math Results by Group

Group	Grade	2008	2009				Number Tested		
		% Prof.	Regular Test		Regular & Retest 1		2009		2008
			% Prof.	Gain: 08-09	% Prof.	Gain: 08-09	Total	Retest 1	Total
All	all	70.3	72.3	<b>2.0</b>	79.9	<b>9.6</b>	32655	7498	32503
AA	all	56.1	58.9	<b>2.8</b>	68.9	<b>12.7</b>	13500	4644	13500
AI	all	62.1	68.1	<b>6.0</b>	78.1	<b>16.0</b>	160	35	161
AS	all	80.1	76.6	<b>-3.5</b>	85.5	<b>5.5</b>	1736	262	1742
H	all	63.6	66.8	<b>3.3</b>	76.9	<b>13.3</b>	2896	817	2797
M	all	72.1	74.0	<b>1.9</b>	81.7	<b>9.5</b>	1696	376	1565
W	all	85.4	87.0	<b>1.6</b>	91.5	<b>6.0</b>	12667	1364	12725

# 2009 EOG Math Results by Status

Group	Grade	2008	2009				Number Tested		
		% Prof.	Regular Test		Regular & Retest 1		2009		2008
			% Prof.	Gain: 08-09	% Prof.	Gain: 08-09	Total	Retest 1	Total
non FRL	all	83.3	85.6	<b>2.3</b>	90.6	<b>7.3</b>	16013	1958	16241
FRL	all	57.6	59.6	<b>1.9</b>	69.7	<b>12.1</b>	16642	5540	16093
non LEP	all	71.3	73.9	<b>2.6</b>	81.0	<b>9.6</b>	30058	6600	29534
LEP	all	55.2	54.8	<b>-.4</b>	68.0	<b>12.8</b>	2597	898	2239
non SWD	all	74.5	76.5	<b>2.0</b>	83.7	<b>9.2</b>	26793	5363	27544
SWD	all	47.3	49.3	<b>2.0</b>	59.7	<b>12.4</b>	4911	1905	4790

# 2009 Science Results

Grade	Group	2008	2009				Number Tested		
		% Prof.	Regular		Regular & Retest 1		2009		2008
			% Prof.	Gain: 08-09	% Prof.	Gain: 08-09	Total	Retest 1	Total
5	All	42.5	47.0	4.5	55.8	13.4	5557	1759	5098
5	AA	21.6	27.7	6.1	35.9	14.3	2238	918	2045
5	AI	47.6	30.0	-17.6	40.0	-7.6	30	11	21
5	AS	51.1	51.2	.1	60.7	9.6	285	88	313
5	H	29.2	30.7	1.5	39.4	10.3	525	199	449
5	M	45.2	47.5	2.3	58.5	13.3	282	89	259
5	W	64.9	70.1	5.2	79.2	14.3	2197	454	2010
8	All	51.2	54.5	3.3	61.3	10.1	5479	1617	5272
8	AA	29.5	35.4	5.9	43.5	14.0	2348	981	2268
8	AI	42.3	47.8	5.5	52.2	9.9	23	7	26
8	AS	58.4	53.2	-5.3	60.4	2.0	316	82	267
8	H	35.9	46.8	10.9	53.7	17.8	434	135	407
8	M	56.8	59.5	2.7	64.7	7.9	238	65	206
8	W	76.4	76.9	.4	82.5	6.0	2120	347	2092

# Part Two

## »» Preliminary EOC Results 2009

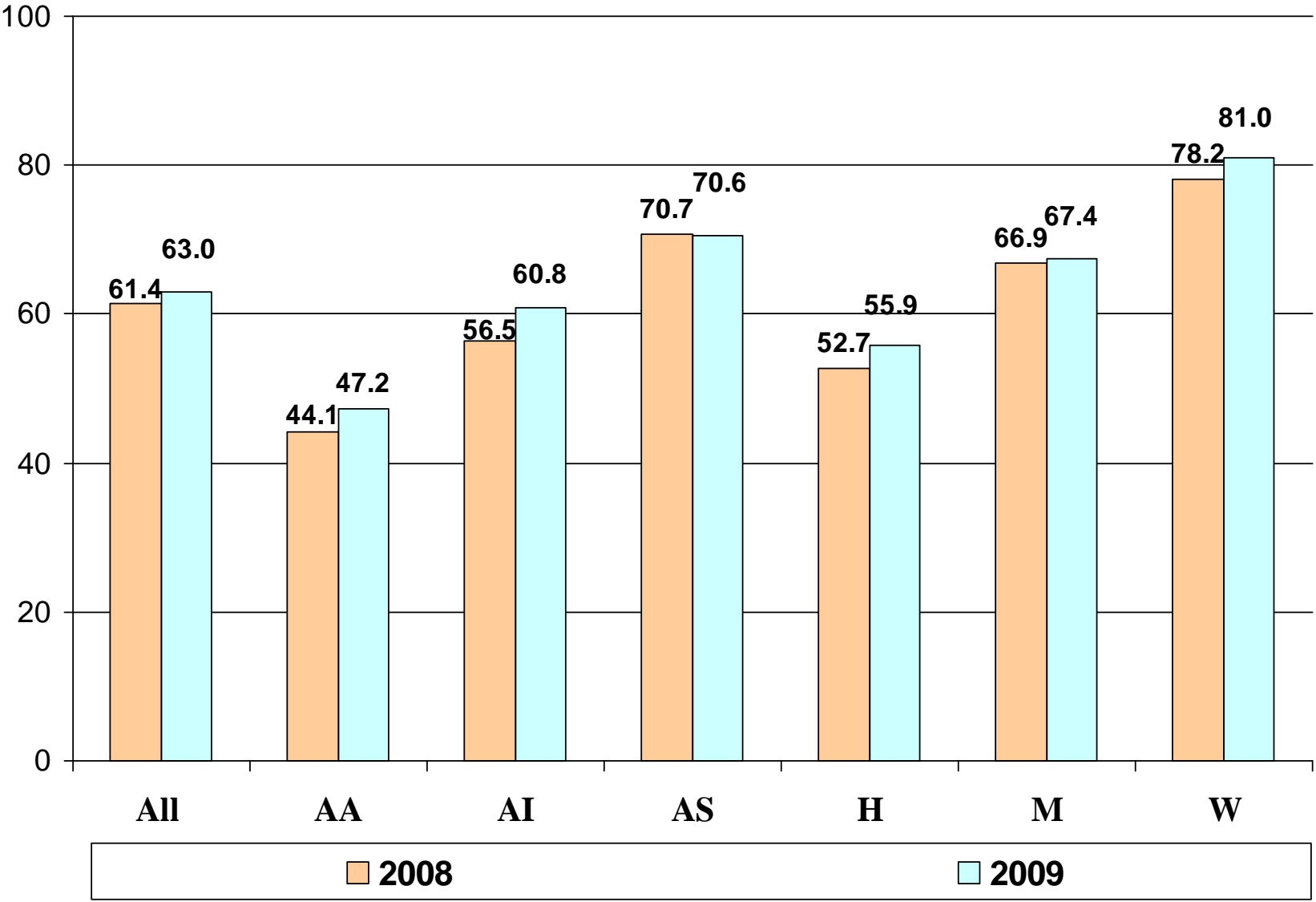
# Overview of 2009 EOC Results

- ▶ GCS students gained in 6/10 EOCs
- ▶ 18 of 25 high schools made positive gains in composite of 10 EOCs
- ▶ 11 of 25 high schools = >5 percentage point gains
- ▶ 5 of 25 high schools = >10 percentage point gains
  - The Academy at Smith, The Academy at Central, The Middle College at N.C. A&T, The Middle College at GTCC - High Point, Southeast High
- ▶ U.S. History (7.7) Chemistry (7.1) and Geometry (4.7) progressed significantly

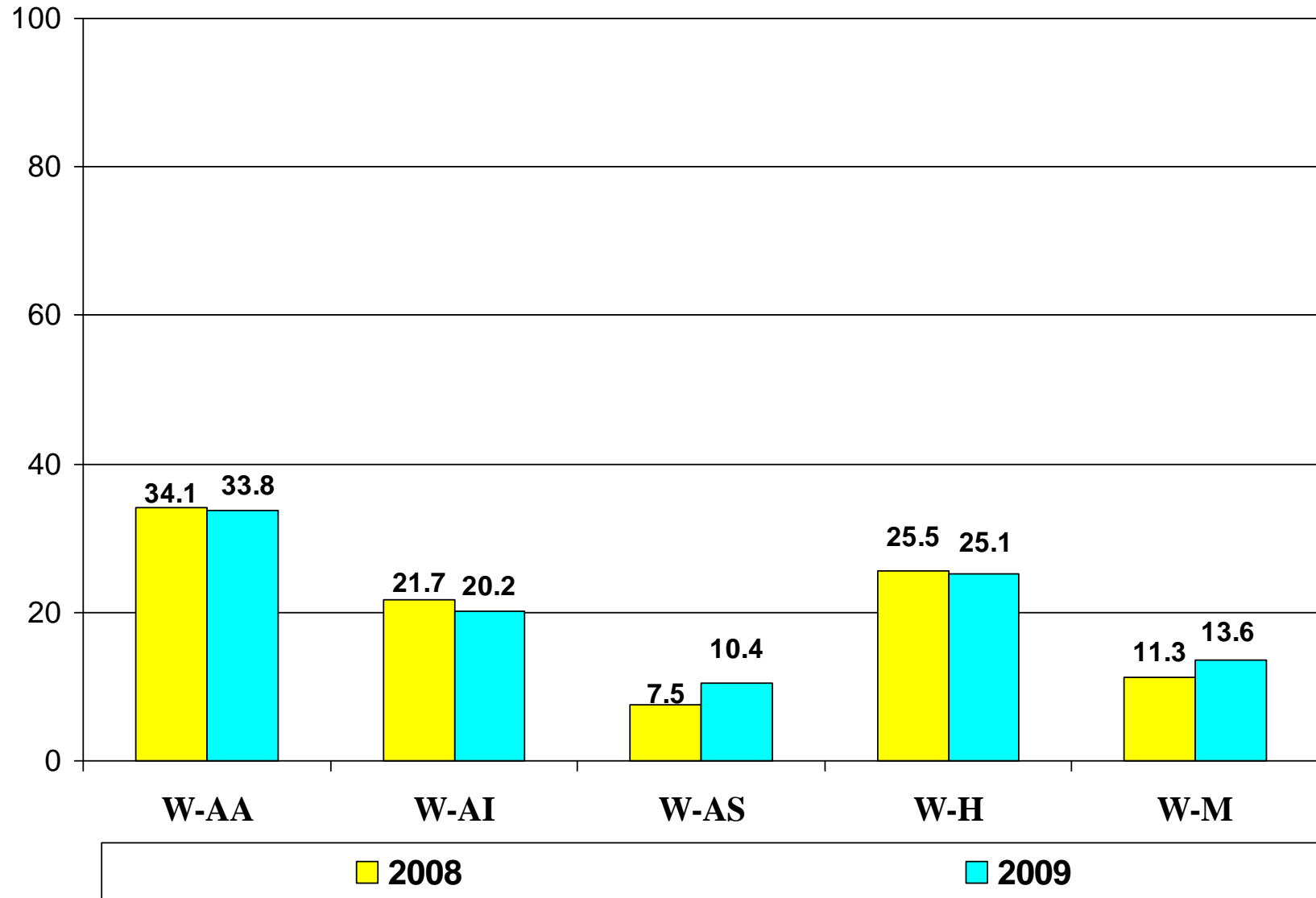
# More on preliminary EOC info

- ▶ **Composite score for 10 EOCs = 1.6 percentage point gain**
- ▶ **Gain greater for ethnic groups**
  - American Indian gained 4.3 percentage points
  - African-American gained 3.1 percentage points
  - Hispanic gained 3.1 percentage points
- ▶ **Other AYP subgroups**
  - LEP = 4.4 percentage point increase
  - FRL = 2.9 percentage point increase
  - SWD = 0.3 percentage point increase

# EOC Composite: 2008 vs. 2009



# Composite EOC Gaps: 2008 vs. 2009



# 2009 EOC Results by Subject

EOC	Percent Proficient			Number Tested		
	2008	2009	Gain: 08-09	2008	2009	Dif: 08-09
Algebra I	55.4	54.6	<b>-.8</b>	6752	7581	<b>829</b>
English I	67.1	65.7	<b>-1.4</b>	6587	6742	<b>155</b>
Biology	64.1	64.7	<b>.6</b>	5522	6142	<b>620</b>
Civics & Economics	65.5	65.4	<b>-.1</b>	5802	6279	<b>477</b>
US History	64.0	71.7	<b>7.7</b>	4940	5157	<b>217</b>
Algebra II	58.4	59.0	<b>.6</b>	3976	3402	<b>-574</b>
Geometry	60.4	65.1	<b>4.7</b>	4879	4757	<b>-122</b>
Physical Science	46.4	42.8	<b>-3.6</b>	3105	2474	<b>-631</b>
Chemistry	66.0	73.1	<b>7.1</b>	2372	2524	<b>152</b>
Physics	83.2	84.5	<b>1.3</b>	322	362	<b>40</b>

# Challenges and next steps

- ▶ Continuing to increase elementary and middle school students' EOG reading achievement
- ▶ More rapid growth needed in high school student achievement to meet new graduation standards
- ▶ Better student growth in Algebra 1, English II, Civics and Economics, Physical Science
- ▶ Closing the achievement gaps in both EOGs and EOCs
  - Particularly reading EOG; and, 5 major EOCs between students of color and white students, socio-economically disadvantaged students and white students.

# Questions & Answers

»» Thank You!



**Guilford  
County Schools**

**STRIVING. ACHIEVING. EXCELLING.**

**2009 Preliminary EOG & EOC Data**

**July 7, 2009**



**Guilford County Schools**  
**STRIVING. ACHIEVING. EXCELLING.**