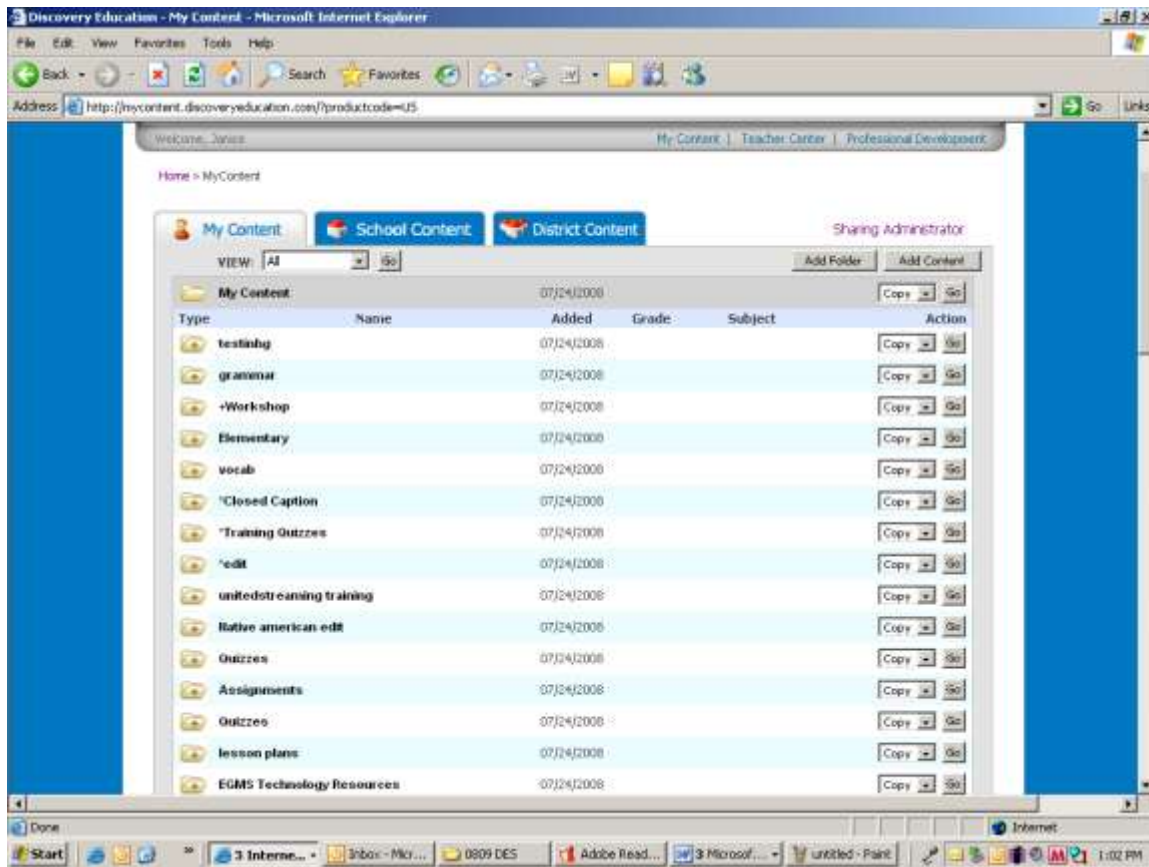


My Content

This feature allows you to collect, organize, share and retrieve your favorite *Discovery Education streaming* media resources, assignments, quizzes and writing prompts in one convenient place. Located in the navigation bar at the top of the screen, “My Content” is accessible from anywhere on the site.



You now have the ability to add *Discovery Education streaming* content to folders you create in My Content, by using the “Add to” drop down menu on any media resource page. You can create sub-folders within main folders to create hierarchies within content, grade levels or courses. You can also choose to share folder contents with your school and your district. Adding resources to My Content does not initiate a playing or downloading procedure.

The purpose of My Content is to bookmark the resource to avoid searching for it again. All files and projects are stored on the *Discovery Education streaming* servers, school servers.

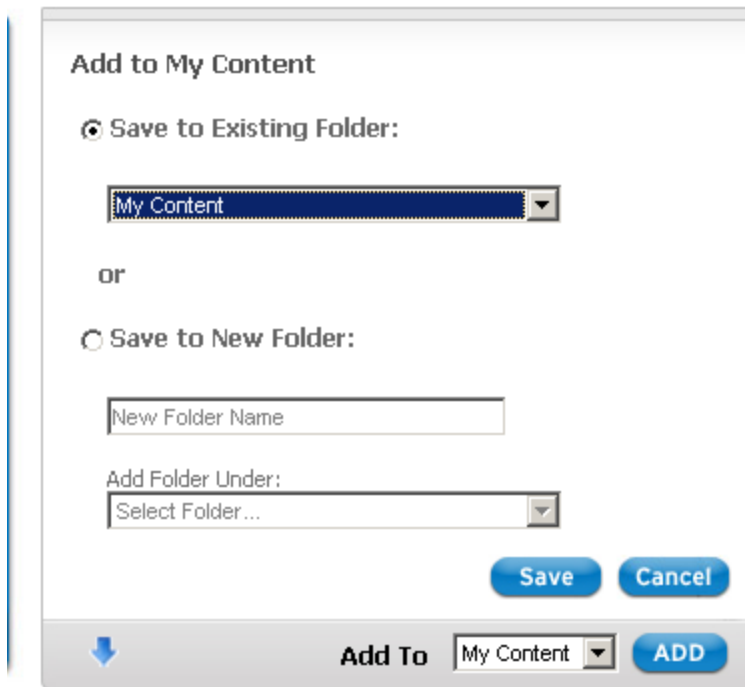
Add a Media Resource to My Content

1. Locate a resource that you wish to add to My Content.

2. Select “My Content” from the “Add to” drop down menu and click “ADD.”

NOTE: Make sure to allow pop-ups from *Discovery Education streaming* when adding material to My Content, or hold down the “Control” key when clicking the “ADD” button to temporarily allow the pop-up window to open.

3. A pop-up window will open. You may add the resource to the “My Content” default folder, select a folder or add it to a new folder.



4. If you select “Add to New Folder,” follow the prompts and enter a folder name and folder location. My Content allows you to create folders within folders.

5. Click on “Add” and the window will display a confirmation message, telling you that your content has been added.

6. To access your content, click on the “My Content” link on the navigation bar at the top of the screen.

Put the flexibility of My Content to work for you. Once you have added media resources to My Content, you can use the pull down menu to copy, move, share and delete them at any time. You can also sort your resources

by type, name, creation date, subject, or grade. Use the arrows to move resources up or down the list, so that they are organized in the way that is most useful to you.

Important Notice

Discovery Education streaming videos are available to Guilford County Schools teachers for educational purposes. GCS teachers/personnel are required to adhere to copyright regulations when using this resource. Unauthorized use of these materials violates copyright laws and the perpetrator can be prosecuted. Be sure to read the Terms of Use at the bottom of the Discovery Education website.