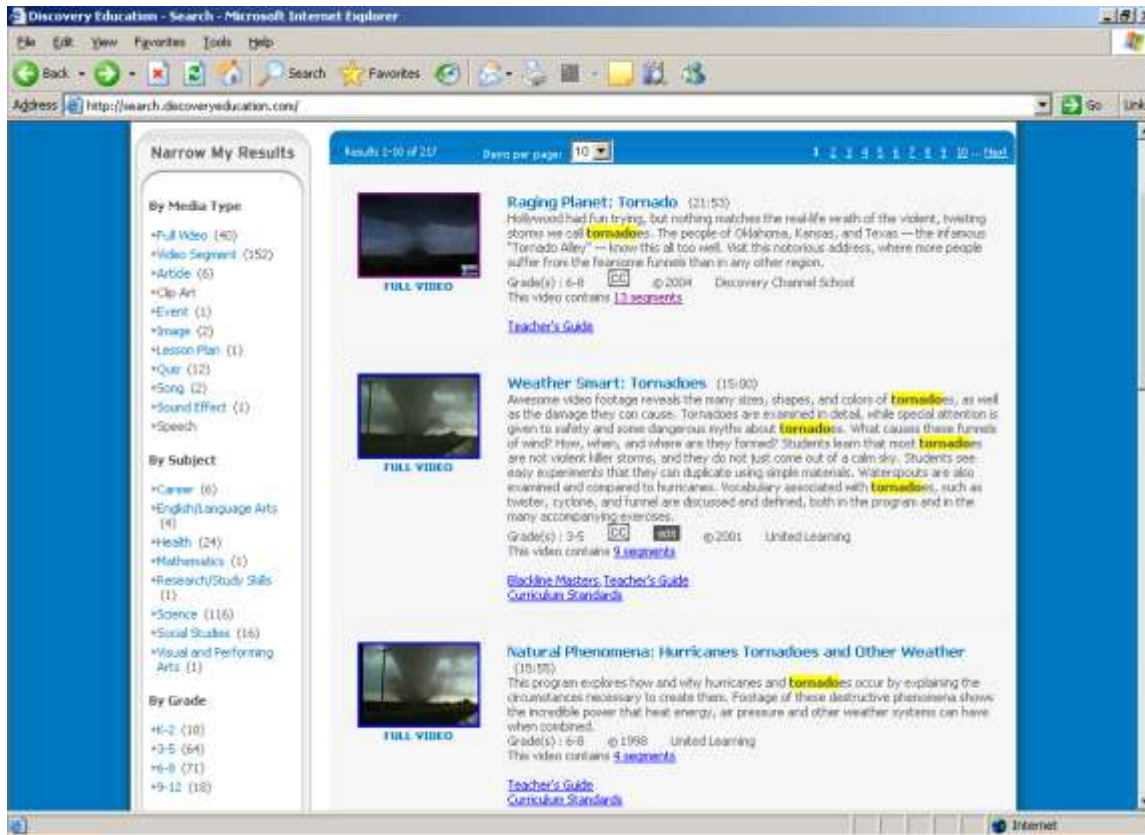


# Understanding Your Search Results



Unless you specify that you only want one media type, you will see the Full Views first, then Video Segments, etc.

Information about the video:

**Weather Smart: Tornadoes** (15:00)

Awesome video footage reveals the many sizes, shapes, and colors of **tornadoes**, as well as the damage they can cause. Tornadoes are examined in detail, while special attention is given to safety and some dangerous myths about **tornadoes**. What causes these funnels of wind? How, when, and where are they formed? Students learn that most **tornadoes** are not violent killer storms, and they do not just come out of a calm sky. Students see easy experiments that they can duplicate using simple materials. Waterspouts are also examined and compared to hurricanes. Vocabulary associated with **tornadoes**, such as twister, cyclone, and funnel are discussed and defined, both in the program and in the many accompanying exercises.

Grade(s) : 3-5 @2001 United Learning

This video contains [9 segments](#)

[Blackline Masters](#), [Teacher's Guide](#), [Curriculum Standards](#)

**Length (time)**: 15:00

**Keyword**: tornadoes

**Grade level**: 3-5



**Extra materials that are provided**: Blackline Masters, Teacher's Guide, Curriculum Standards

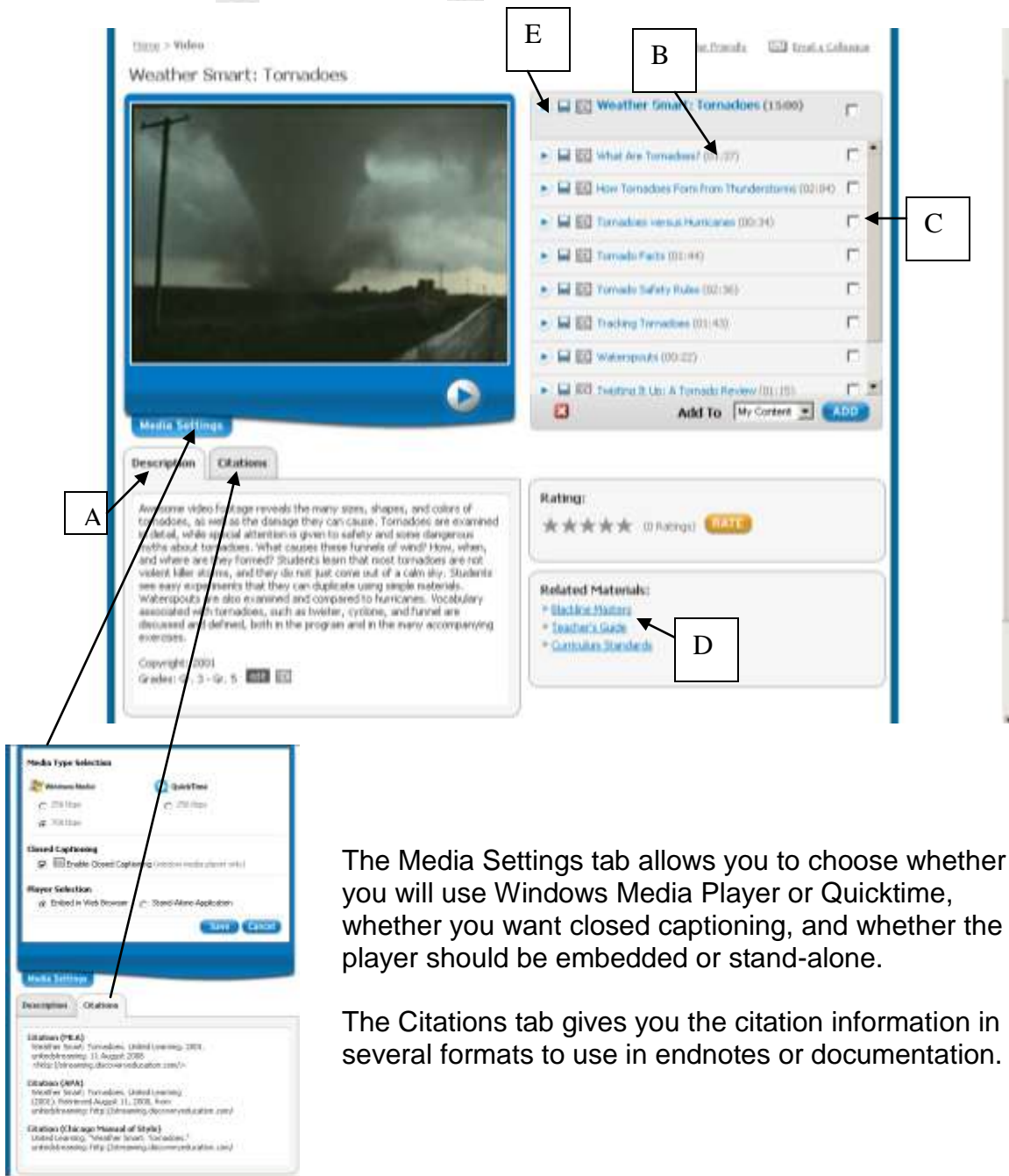
**Closed captioning available**: CC icon

**Video can be edited in MovieMaker**: edit icon

## Exploring the Full Video Page

When you choose a video or video segment from the search list, you will view a screen that gives

- (A) a description of the video with grade level, copyright, etc.
- (B) segment names with times
- (C) opportunity to add video/video segment to “My Content” (explained on page 11 of this manual).
- (D) related materials if available
- (E) options to play  or download  video/video segments



The screenshot shows the 'Weather Smart: Tornadoes' video page. The main video player is at the top left, with a play button and 'Media Settings' below it. To the right is a list of video segments with their durations. Below the video player is a description and citation section. The 'Description' tab is active, showing a detailed text description of tornadoes, their formation, and safety rules. The 'Citations' tab is also visible, showing citation information in multiple formats. The 'Related Materials' section is at the bottom right, listing links to 'Blackline Masters', 'Teacher's Guide', and 'Content Standards'. The 'Media Settings' dialog box is shown at the bottom left, with options for 'Media Type Selection' (Windows Media or QuickTime), 'Closed Captioning' (Enable Closed Captioning), and 'Player Selection' (Embedded in Web Browser or Stand-Alone Application). Callouts A through E are placed over the page to highlight these features.

The Media Settings tab allows you to choose whether you will use Windows Media Player or Quicktime, whether you want closed captioning, and whether the player should be embedded or stand-alone.

The Citations tab gives you the citation information in several formats to use in endnotes or documentation.

## Other Features and Tools



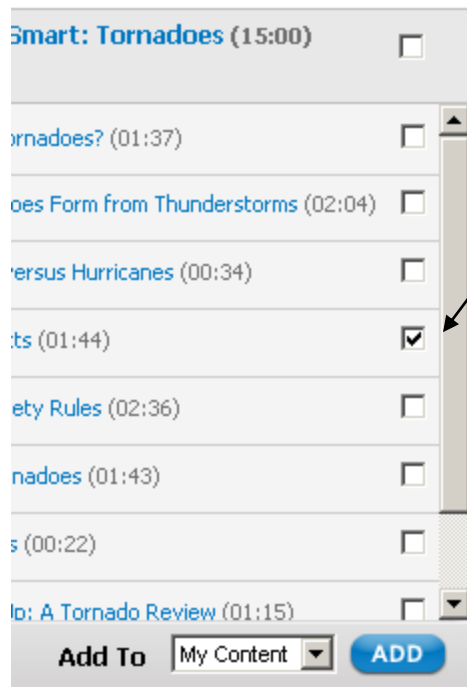
### Print Video Information

Generate pages that include video information and are printer-friendly by clicking on the gray link labeled “Printer Friendly.”



### E-mail a Friend

You can send page links by e-mail to other *Discovery Education streaming* users by clicking on the link labeled “E-mail a Friend.” Simply type your colleague’s e-mail address in the field provided, type a personal message and click the gray “Send E-mail” button.



### Add to

With the “Add to” feature, you can add selected video segments to folders in “My Content,” quizzes or assignments.

1. Check the box next to the video segment you wish to add.
2. Scroll to the bottom of the screen and make your selection from the “Add to” menu.
3. Click the “ADD” button.