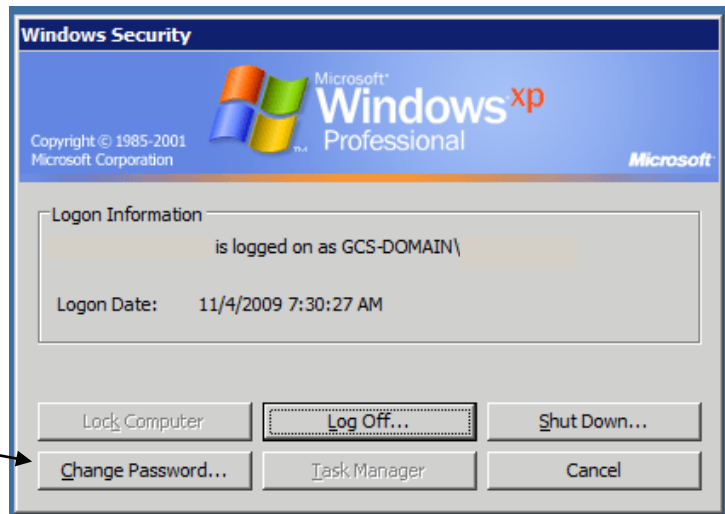


How to Change your Network Password:

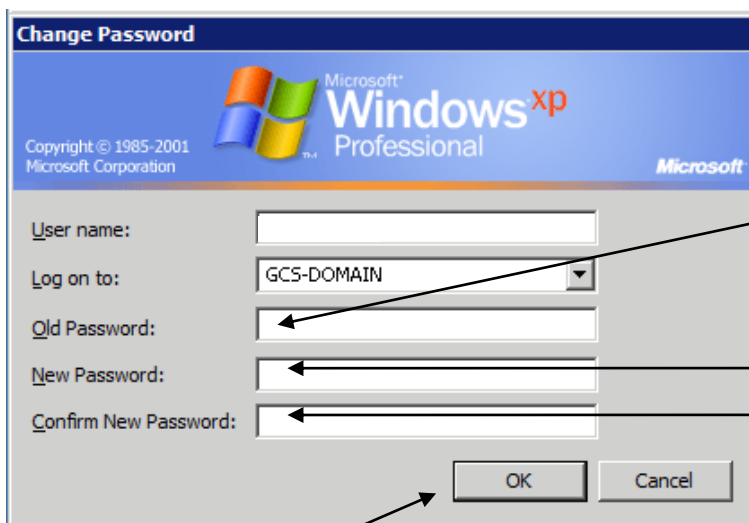
On a GCS computer, press the Ctrl+Alt+Delete keys on the keyboard.



The Windows Security dialog box will appear.



Select "Change Password".



Enter you current password in the "Old Password" text box.

Enter the desired new password in the "New Password" and the "Confirm New Password" text box.

Select "OK" when you are finished.

Password Tips:

- 1) Never write down a password or store it in an insecure manner
- 2) Never share your passwords with friends or other people online
- 3) Do not use significant dates or names for passwords
- 4) Passwords should contain upper and lowercase letters and symbols
- 5) The longer the password the better
- 6) Don't use the same password for everything
- 7) Don't provide your password based on an e-mail request
- 8) A good password will not be found in a dictionary