

FACTS AND FIGURES

MORE TAKE CHALLENGING COURSES

The number of high school students enrolled in Advanced Placement or International Baccalaureate courses increased from 2,810 students in 1999-2000 to 3,694 students during the 2000-2001 school year. In 2000-2001, GCS students took 3,422 AP exams compared to only 2,864 the year before.

FACILITIES

Total Schools.....	97
New Schools to Open in 2001-2002	2
New Classrooms.....	103
Additional Seats	1,887

STUDENT ENROLLMENT (2000-2001)

Elementary	30,488
Middle	14,832
High	17,044
Special.....	206
Total Students	62,570

DEMOGRAPHICS

50 percent majority; 50 percent minority

AVERAGE CLASS SIZE

Elementary	24
Middle	26
High.....	28.5

STUDENTS

Languages/Dialects	82
Student Cultural and Ethnic Groups.....	123
Low-Income Students	25,000
Special Education Students.....	10,000
Accelerated Learners	7,000

CLASS OF 2001

- Diplomas 3,078
- Certificates of Achievement..... 36
- Graduate Certificates 27
- Local Certificates
- Foreign Exchange Certificates..... 17
- National Merit Scholars..... 17
- Morehead Scholars
- IB Diplomas Granted
- Military Academy Appointments..... 8
- Scholarships Earned \$30.1 million

TOP TEN PERCENT SAT SCORES HIGHER THAN STATE AND NATION

	GCS		NC		US	
	2000	2001	2000	2001	2000	2001
Verbal	597	608	581	582	589	588
Math	621	631	594	593	608	607
TOTAL	1218	1239	1175	1175	1197	1195

CHANGING THE FACE OF EDUCATION

During the 2000-2001 school year, the Guilford County Schools implemented the most ambitious school construction plan in the past 30 years. Using \$200 million in state bond funds, the construction plan is relieving school overcrowding, adding more technology and creating campus environments more conducive to optimum teaching and learning. Two new schools will open during 2001-2002: Falkner Elementary (top right) and Hairston Middle (bottom right).



PROJECTS UNDER CONSTRUCTION

Andrews High
Kiser Middle
Northwest High
Smith High
Welborn Middle
Western High
Waldo C. Falkner Elementary
Otis L. Hairston Middle
Jackson Middle
Southeast Middle

PROJECTS IN DESIGN

Alderman Elementary
Allen Jay Elementary
Bessemer Elementary
Brightwood Elementary
Cone Elementary
Dudley High
Florence Elementary
Frazier Elementary
General Greene Elementary
Gillespie Elementary
Griffin Middle/William Penn Auditorium
Grimsley High
High Point Central High

Jamestown Middle
Lindley Elementary
Mendenhall Middle
Millis Road Elementary
Montieu Elementary
New High Point Elementary
Northwood Elementary
Page High
Sedalia Elementary
Sedgefield Elementary
Tomlinson Elementary
Wiley Elementary

OUR BUSINESS IS.....TO PROVIDE UP-TO-DATE EDUCATIONAL TECHNOLOGY

GCS ON THE WEB

The most current information about GCS may be found on the Internet at www.guilford.k12.nc.us. You can find out which school your child will attend; what academic programs and choices are available throughout the district; your school's test scores; the district's mission, goals and policies; apply for a job, and more. In addition, most GCS schools have their own websites that may be accessed from the district's web page.

TECHNOLOGY: A SYSTEM PRIORITY

Technology continues to be a system priority and our building plan will help our system become even more technology-rich. We have over 16,000 computers helping students increase their reading, math and technology skills. Over 74 percent of classrooms have access to the Internet and other on-line resources, compared to only 63 percent of classrooms nationwide. Only 10 of 3,227 high school seniors who took the N.C. Computer Proficiency Test during the 2000-2001 school year were not proficient.

GCS TECH CENTER:

WHERE TEACHERS GO TO CLASS

GCS has its own Technology Center where teachers and staff take free courses to keep abreast of the latest computer software applications and programs. The center also maintains and repairs the district's computers where the student to computer ratio is one to four.

SCHOOLS HAVE HIGH-SPEED ACCESS

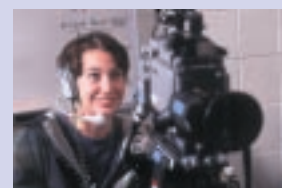
All GCS schools have high-speed access to the Internet and we taught the first class in North Carolina via the Internet. All 14 high schools, the Weaver Education Center, and the GCS Technology Center are connected to the Information Highway, enabling students to take advanced classes originating in other high schools and from sites all over the country and world.

GCS ON CABLE TELEVISION

Guilford Educational Television (Cable Channel 2) broadcasts a variety of original programming to promote and publicize school events, including coverage of school board meetings. It provides a convenient way to showcase students and schools and to act as a virtual town hall.

REAL-WORLD APPLICATIONS

In 2000-2001, 876 GCS students enrolled in College Tech Prep Work-Based Learning programs such as Youth Apprenticeships, Internships and Cooperative Education learning experiences.



FROM THE SUPERINTENDENT



Recent research shows that citizens rank public education as their single most important issue. Those of us who work in public education each day could not agree more.

As more people come to understand that the most significant investment a community can make is the education of its young people, our jobs become less singular and more of a team effort.

I am proud to say this team has grown tremendously during the 2000-2001 school year. This is due to a concerned, committed and responsive community who joined hands with us in many positive efforts to help our 62,570 students succeed.

Over \$5 million in support to GCS schools and students was pledged by area businesses and foundations in a three-year project known as the "Commitment to Excellence." The support comes from area businesses known as "Action Greensboro," who generously came together to improve public schools.

Our joint efforts are paying off in the classroom. An international study revealed this spring that our eighth graders rank exceedingly well in mathematics and science when compared with their peers across the country and the world.

Our fifth grade Gateway scores this spring were also noteworthy. Of the 4,859 fifth-grade students who took the End-of-Grade reading test, 93.6 percent successfully passed through the Gateway, meaning they are proficient or on grade level.

Our youngest students also made great gains this year. These four-year-old preschoolers made a huge 57 percent jump in their school readiness skills during 2000-2001. Consequently, they will enter kindergarten this fall on a more even keel with their classmates. A good start goes a long way.

We implemented many new TeachGuilford incentives to recruit and retain the best possible teachers for our classrooms. Our beginning teachers have the opportunity to earn \$7,500 EquityPlus scholarships; to get \$1,200 of their salary on their first day of employment; purchase new cars at invoice pricing; receive banking discounts; and reduced or waived utility and apartment deposits.

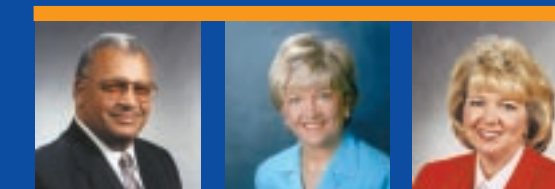
Our students, parents and teachers are thrilled with our \$200 million, systemwide school building and renovation plan. Two new schools will open in the 2001-2002 school year; and major renovations and expansions at seven others will be completed.

It is imperative that we continue to share our successes and challenges with our community. It is important that we continue to listen to our community. As we did in 2000-2001, we will talk face-to-face with small groups of teachers, students, principals, parents, business, community and faith leaders to hear what they feel is important.

It is through our citizens, young and old, and our businesses, big and small, that meaningful support of public education will grow. We invite you to see firsthand the exciting work going on in our classrooms each day. Expect to see inspired teachers challenging bright, inquisitive students to go further and reach higher. You will discover that our business is building futures. We challenge you to make it yours as well.

Terry Grier
Terry Grier, Ed.D.
Superintendent
Guilford County Schools

GUILFORD COUNTY BOARD OF EDUCATION



DISTRICT 1
GARRY BURNETT
P.O. Box 1033
HIGH POINT, NC 27261
885-0529

DISTRICT 2
SUSAN MENDENHALL,
BOARD CHAIRMAN
614 W. FARRISS AVE.
HIGH POINT, NC 27262
883-0879

DISTRICT 3
DARLENE GARRETT
8003 WILLOW GLEN TRAIL
GREENSBORO, NC 27455
643-6070



DISTRICT 4
ALAN W. DUNCAN
3103 ST. REGIS RD.
GREENSBORO, NC 27408
545-3048

DISTRICT 5
ANITA SHARPE
5521 DRAKE RD.
GREENSBORO, NC 27406
294-5238

DISTRICT 6
DEWEY TEDDER
3414 OLD ONELOW RD.
GREENSBORO, NC 27407
292-0456



DISTRICT 7
KRIS B. COOKE
1223 BUCKINGHAM RD.
GREENSBORO, NC 27408
379-0649

DISTRICT 8
CALVIN J. BOYKIN
BOARD VICE CHAIRMAN
1111 W. FLORIDA ST.
GREENSBORO, NC 27403
273-7934

DISTRICT 9
DR. JOHNNY HODGE, JR.
1401 DAN'S RD.
GREENSBORO, NC 27401
272-0720



AT LARGE
PAW ALLEN
12 ELM RIDGE LANE
GREENSBORO, NC 27408
282-4619

AT LARGE
DOROTHY KEARNS
1315 LONGCREEK DR.
HIGH POINT, NC 27262
887-6177



GUILFORD COUNTY SCHOOLS
712 NORTH EUGENE STREET, GREENSBORO, NC 27401
PHONE: 336.370.8100
INTERNET ADDRESS: [HTTP://WWW.GUILFORD.K12.NC.US](http://www.guilford.k12.nc.us)
TERRY GRIER, Ed.D., SUPERINTENDENT

Guilford
2000
2001

GUILFORD COUNTY SCHOOLS

Annual Report



BUILDING FUTURES

"Students will graduate as responsible citizens prepared to succeed in higher education or in the career of their choice."

The Guilford County School district offers parents and students a wide range of educational choices not usually found in public school systems, including 13 magnet schools that specialize in specific learning themes. All 97 Guilford County Schools are accredited by The Southern Association of Colleges and Schools. Among the popular school choices are:

JONES ELEMENTARY SPANISH IMMERSION
The Spanish Language Immersion Program is one of only a few in the nation. All academic core subjects are taught in Spanish and students develop advanced proficiency in listening, speaking, reading and writing in Spanish. Immersion students may continue their Spanish studies at Aycock Middle School.

MONTESSORI EDUCATION
Parents have the option of applying for enrollment at two Montessori based schools--Tomlinson in High Point for four, five and six year olds, and Erwin in Greensboro, for four and five year olds.

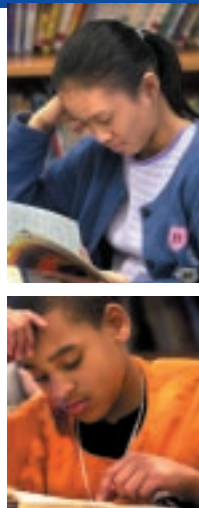
INTERNATIONAL BACCALAUREATE (IB)
GCS has two high school IB programs, one at High Point Central High School in High Point and the other at Grimsley High School in Greensboro. A third will soon be offered at Smith High School. Students graduating from the IB program often enter college as second semester freshmen or sophomores. Only a few of N.C.'s high schools are authorized to offer the IB Diploma Program.

CHARACTER EDUCATION
Character Education is integrated into regular classroom instruction, resulting in fewer discipline problems. A total of 386 fewer students received out-of-school suspensions in 2000-2001 compared to the year before.

HIGH SCHOOLS THAT WORK
High Schools That Work is a research-based restructuring effort proven to raise student achievement. A total of 13 GCS high schools have instituted the program since 1995. Among the 10 key practices that help accelerate student achievement are high expectations, workforce development and technical/vocational studies, and work-based learning.

MIDDLE COLLEGE HIGH SCHOOLS
GCS offers students the option of completing up to three years of high school on one of two college campuses, Greensboro College (for 10th, 11th and 12th graders), or Guilford Technical Community College (for 11th and 12th graders). Both programs serve up to 125 students in small classes. Students may earn both high school and college credit simultaneously.

PAIDEIA PROGRAM
The Paideia program offers a rigorous, liberal arts education in grades K-12 that will allow all graduates to have the skills necessary to earn a living, to think and act critically as responsible citizens, and to continue educating themselves as lifelong learners. The GCS Paideia faculty consists of more than 30 staff members who offer teacher training and provide coaching and facilitation at school sites.



TEACHERS RECRUITED, REWARDED, SUPPORTED IN CREATIVE WAYS
GCS seeks talented teachers from all parts of the globe, taking advantage of the Visiting International Faculty (VIF) program that has helped bring over 100 international teachers for Guilford County's classrooms. VIF teachers bring academic knowledge as well as cultural awareness and diversity to their classrooms.

GCS believes in supporting new teachers. There are five experienced Teachers on Special Assignment (TOSAs) to help beginning teachers succeed in the classroom. They impart and model good behavior management techniques, and help with lesson planning and specialized instruction for their new colleagues.

TEACHERS GET SPECIAL INCENTIVES
All teachers new to GCS may take advantage of many special benefits. Among them are a first-day pay option to receive \$1,200 on their first day of work; a prepaid \$400 credit card to buy classroom supplies; banking incentives and new car discounts.

GCS TEACHERS EARN NATIONAL CERTIFICATION
A total of 119 GCS teachers have earned certification from the National Board of Professional Teaching Standards. This affirmation of a teacher's knowledge and professional expertise has been compared to an accountant earning his or her CPA license or an attorney passing the bar exam.



ACHIEVEMENT GAP SHRINKING
Among our biggest challenges is the elimination of the achievement gap between majority and minority students. Two community summits in 2000-2001 featured state, national, and international educational experts who addressed how best to close the gap.

Equity funds from our local government continue to be a major resource to help us equalize opportunities for students in schools and neighborhoods impacted by poverty. These extra equity dollars pay for additional teaching positions, tutors, and other strategies to help students reach grade level.

We're making progress. African-American eighth graders in the Guilford County Schools had the third highest science score among African-American

students in the "benchmarking" jurisdictions and the United States, according to the 1999 Third International Math and Science Study (TIMSS) released in April 2001.

- Between 1993 and 1999, the average total SAT score for GCS African-American students increased 19 points, greater than the 15-point North Carolina increase and the 12-point United States increase.
- The GCS average math SAT score for African-American students was above the United States average and nine points above the North Carolina average.

EIGHTH GRADERS RANK HIGH GLOBALLY
GCS students scored 27 points above the international average in mathematics and 46 points above the international average in science, topping their counterparts in North Carolina and five other states on the East Coast.

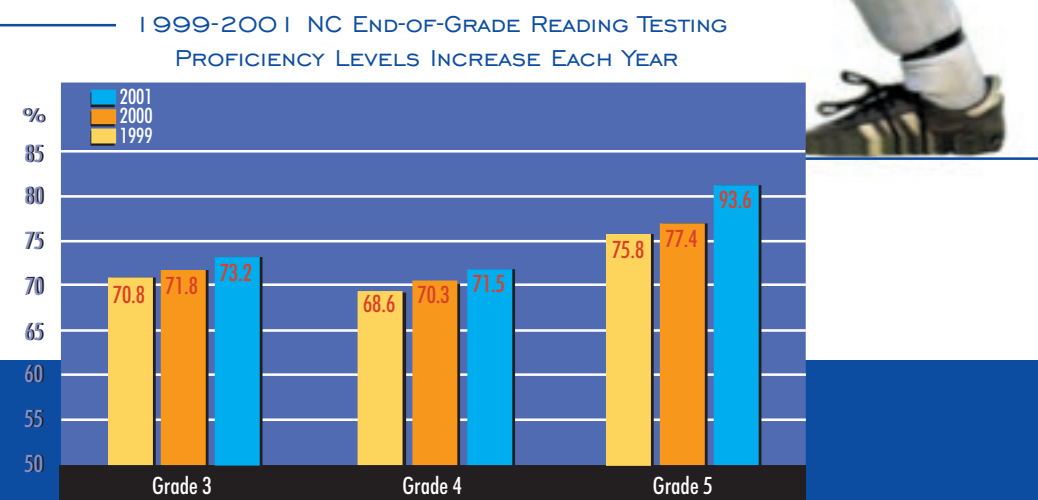
These results from the 1999 Third International Mathematics and Science Study (TIMSS) also showed that GCS eighth graders scored 12 points above the U.S. average in math and 19 points above the U.S. average in science.

STATE ABCs RESULTS

- GCS students showed reading gains in grades three, four and five, with a 3.8 percent increase for fifth graders.
- 93.6 percent of fifth graders passed the state's reading "Gateway" for promotion to the sixth grade.
- 99.9 percent of fifth graders passed the state's math "Gateway" for promotion to the sixth grade.
- Middle school students showed increases in math proficiency, ranging from 9.9 percent for 6th graders to 14.7 percent for 7th graders. Students in 8th grade achieved a 10.1 percent proficiency point gain over last year.

TEAMS WIN SEVEN STATE CHAMPIONSHIPS
Andrews High School took home three state championship trophies during 2000-2001. Four other high schools also won state championships: Ragsdale, High Point Central, Page and Southwest.

GCS ATHLETES EXCEL IN THE CLASSROOM AS WELL
The North Carolina High School Athletic Association recognized five GCS high school athletic teams for having the highest team GPA in that sport on a statewide basis, regardless of classification.



BUSINESS, FOUNDATION AND COMMUNITY SUPPORT GROWS
The business and foundation community known as Action Greensboro pledged \$5 million during 2000-2001 to support GCS school improvement initiatives over the next three years. Among the initiatives supported by Action Greensboro's "Commitment to Excellence" campaign are:

- The district's first summer Academic All-Star Camp was launched in July with top-performing rising ninth graders. The three-week day camp held on the campus of Greensboro College focused on enriching the students' math and verbal talents, as well as developing their leadership skills.
- The 15 schools showing the most academic improvement in 2000-2001 were honored in August with 30 teachers receiving \$1,000 awards and their principals getting \$8,000 for the school.
- Our business partners also fund \$7,500 EquityPlus Scholarships to help recruit teachers for our 15 schools most impacted by poverty.
- Literacy First, a successful, research-based reading acceleration program, was implemented in 25 elementary schools, four middle schools and four high schools during 2000-2001, due to support from the Bryan Foundation.

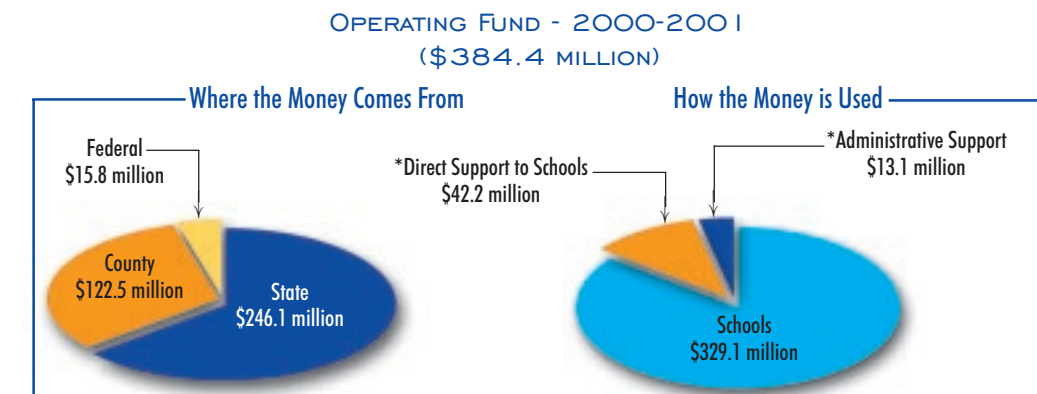
Hundreds of volunteers from business and community groups in Guilford County supported our students and schools in a new "Fill the Bus" initiative, in which over \$200,000 in classroom supplies for teachers were donated.

Our community also supports the annual "Tools for Schools" drive each summer by donating school supplies for deserving students.

The Moses Cone-Wesley Long Foundation contributed a \$300,000 grant to support the school system's Tobacco Free Campus campaign. The grant will help fund the Tobacco Education Alternative program.



YOUR BOARD OF EDUCATION MEETINGS
You are invited to attend meetings of the Guilford County Board of Education. They are held at 6:45 p.m. on the second Tuesday and fourth Thursday of each month. Speakers may address the board by calling 336-370-8992 the day of the meeting, or they may register to speak on-site, 30 minutes prior to the meeting.



In 2000 - 2001, GCS spent an average of \$6,142 to educate each student.
* Direct Support to Schools includes maintenance, facilities, child nutrition, technology, instruction and student services.
* Administrative support services include personnel, finance, Board of Education, Superintendent, community services, insurance.

The audited annual financial report for 2000-2001 is available from the GCS Financial Services Office, 712 N. Eugene St., Greensboro, NC 27401

SYSTEM HIGHLIGHTS (2000-2001)

- Implemented a summer school program for 4,800 students of all grade levels in 2001.
- Three additional magnet school choices were developed for 2001-2002.
- Developed a plan to reduce class size in the 15 schools most impacted by poverty.
- After summer school, 93.6 percent of fifth graders passed EOG tests and were promoted.
- Fifth graders not passing EOG tests will be in classes of 15 or less students in 2001-2002.
- School crime in Guilford County was the lowest of all urban districts in the state.
- Salaries for beginning and first year teachers as well as special education teachers were increased an extra step.
- 26,000 students cast mock votes in the Nov. 2000 "Kids Voting" presidential election, 4,000 more than in the 1996 presidential election.

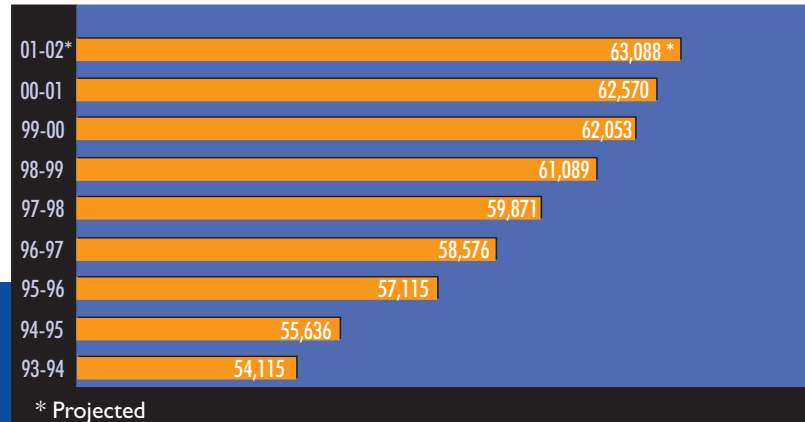
STAFF AND FACULTY HIGHLIGHTS

- Approximately half of our 7,800 employees are certified teachers.
- Percent of minority principals increased from 34 percent in 2000 to 38 percent in 2001.
- Percent of minority central support administrators at executive level and above increased from 25 percent in 2000 to 40 percent in 2001.
- All GCS employees attended diversity training.
- An additional 98 teachers were trained to teach Advanced Placement courses.

STUDENT PERFORMANCE HIGHLIGHTS

- Writing assessment results improved for fourth grade students by 6.1 percent for a total of 67.8 percent proficient, and by 1.1 percent for seventh graders, with a total of 71.1 percent proficient.
- A 7.6 percent increase in proficiency was shown by 10th graders who took the English II test, with 57.9 percent at grade level.
- A total of 29 GCS seniors won Teaching Fellow Scholarships, the largest percent awarded to any school district in the state.
- Number of middle school students qualifying for Duke University's Talent Identification Program increased from 107 to 140.
- Percent of seniors attending four-year colleges increased from 56.7 percent to 61 percent.
- Average SAT scores for the math portion rose by six points, from 498 to 504.

STUDENT ENROLLMENT GROWS EACH YEAR 1993-2002



SCHOLARSHIPS INCREASE BY \$2.6 MILLION

School	Amount
Andrews	\$ 938,178
Dudley	\$2,203,812
Eastern	\$1,506,689
Grimsley	\$5,211,365
High Point Central	\$1,341,252
Northeast	\$1,741,970
Northwest	\$3,968,780
Page	\$3,162,446
Ragsdale	\$2,810,655
Smith	\$1,046,425
Southeast	\$2,003,586
Southern	\$1,406,504
Southwest	\$1,740,431
Western	\$1,831,603
TOTAL	\$30,913,696

SCHOLARSHIP TOTALS 2001-2002

