

Classic View

The Istation’s Indicators of Progress (ISIP™) assessment helps teachers understand how they can personalize your child’s learning. Now ISIP is available for students to take at home.

How does ISIP at Home work?

ISIP is computer-adaptive and reacts to each student’s answers, making it “adaptive” or personalized. If a student answers a question correctly, the next question will be more difficult. If a student answers a question incorrectly, the next question will be less difficult. This provides a clear picture of what each student knows and is ready to learn next.

Your child will use an app on their device to take the ISIP assessment, which takes about 30-40 minutes to complete. Encourage them to do their best. It is expected that they may not know all the answers. **Please do not help them answer questions during the assessment.** Students cannot pass or fail this test; it is simply meant to help teachers make instructional decisions for your child.



Before Assessment

- Communicate with your child’s teacher to get your child’s login credentials.
- Check that the Istation app is already on your child’s device. If not, [click here for more information](#).
- Inspect all equipment to be used (devices and headphones) to ensure it works.
- Check the volume on all devices.
- Make sure that the space is quiet and free from distractions.
- Check for adequate lighting.

Getting Started

If logging in through Clever, [click here for instructions](#).

Step 1: Open the Istation App

- Click on the app.



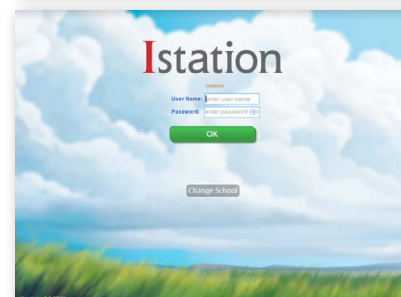
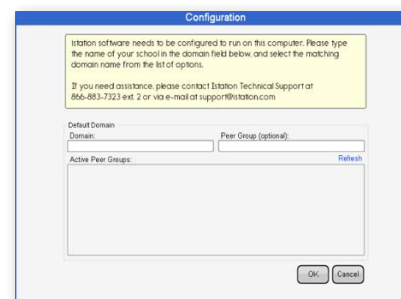
Step 2: Log In

If a configuration box appears:

- Type the name of your child’s school in the domain field. Domain name format is school.district.state (e.g., mcnaair.dallas.tx)
- Click **OK**. (Peer Group can be left blank.)

If the domain does not match your child’s school, click on the **Change School button in the center of the screen. If you have any additional questions, please contact Istation’s Support Team at support@istation.com.*

- Enter the user name and password provided by your child’s classroom teacher.
- Click **OK**.



Step 3: Work in Istation

After logging in, your child will see the school's subscription page. All icons that include "ISIP" or "Oral Reading Fluency" will allow students to access the assessment. Seek guidance from the teacher for what your child should access and when.



During Assessment

- Your child's assessment automatically appears at the first login of each calendar month.
- The assessment will be in progress until the blue **ISIP in Progress** bar disappears.



Observe your child while assessing, but please **do not help** them answer questions.

After Assessment

- Praise your child for working hard and doing their best.
- Communicate with the teacher to discuss your child's progress and their plan of action.

To learn more about Istation, visit