

FALL 2020

Reconnect.
Reopen.
Stay Safe.



GCS Communications: Flowcharts & Channels

August 31, 2020

INTERNAL COMMUNICATIONS FLOWCHART

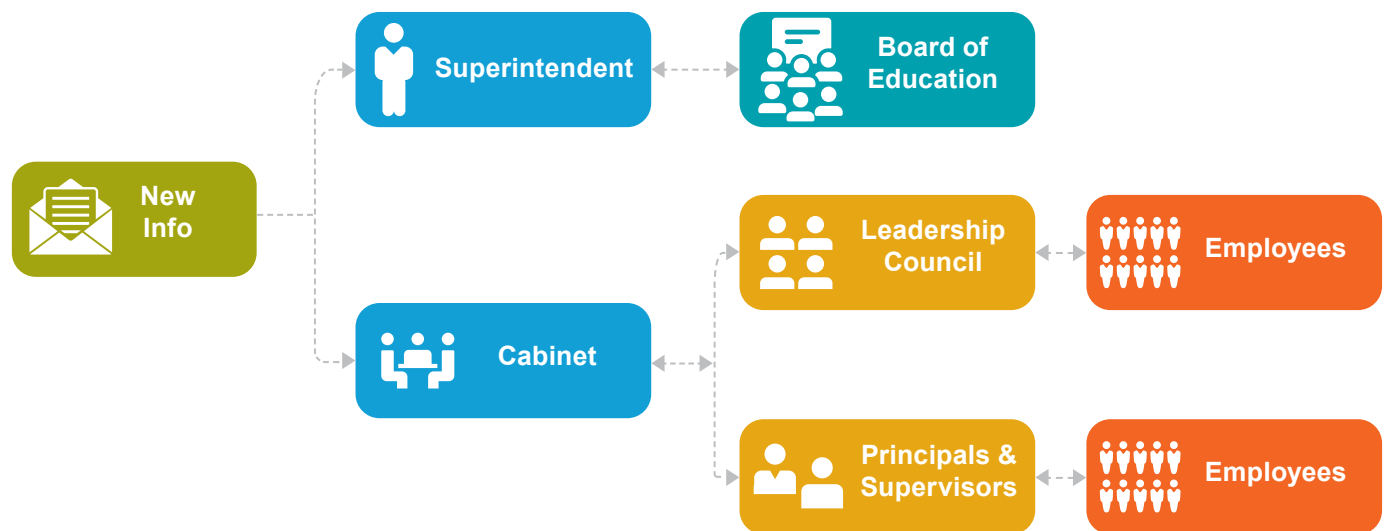
Starts With Employees

GCS believes that well-informed employees are more productive, make better decisions and that employees should hear about news and information affecting them from the district first, before it is shared with people outside of the organization.

Principals and other employee supervisors play a vital role in this process. This chart outlines how news and information flows through the organization prior to being shared with parents and the public.

Flowchart

Who shares the information



INTERNAL COMMUNICATIONS CHANNELS

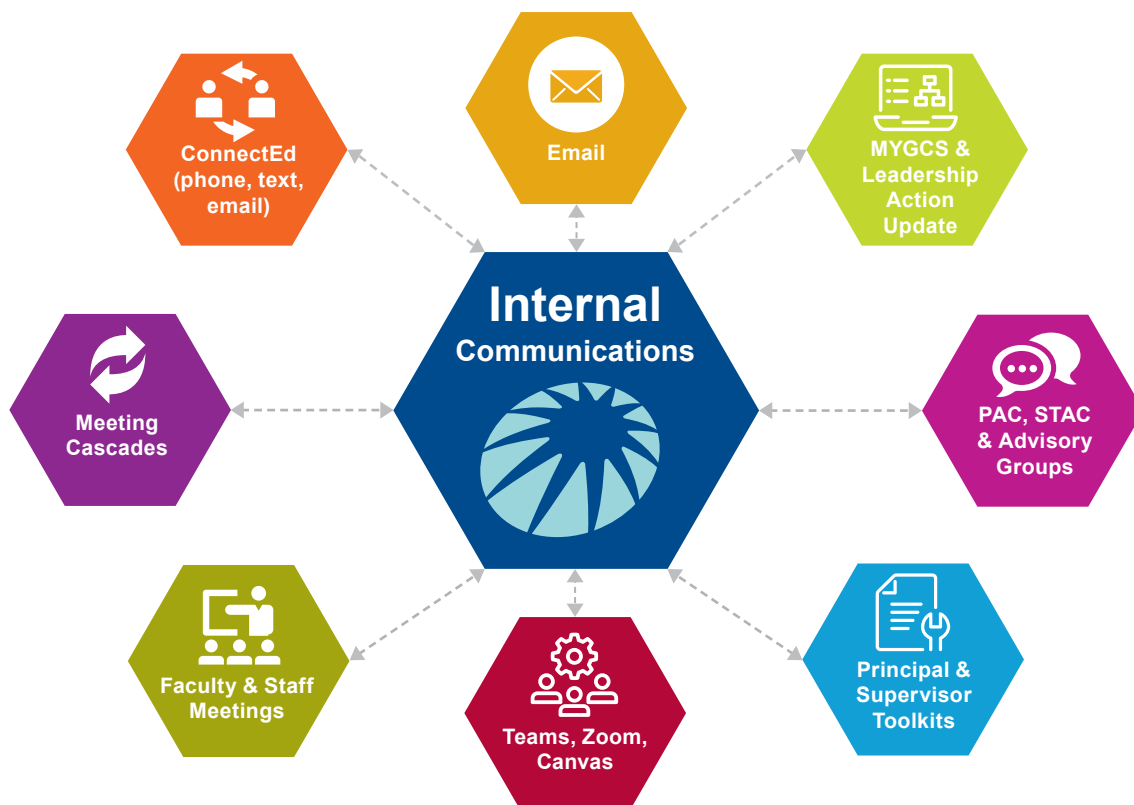
Starts With Employees

GCS understands that communication preferences differ. While we strive for unity of message, we know that one-size-fits all communication doesn't work, and that people prefer to hear from people they know, trust and have relationships with.

This graphic illustrates the primary ways GCS listens to and shares information with employees.

Channels

How the information is shared



EXTERNAL COMMUNICATIONS FLOWCHART

Follows Internal Communications

GCS believes in sharing information as quickly and transparently as possible. This flowchart outlines how important news and information flows from GCS to parents and the public.

Flowchart

Who shares the information



EMPLOYEE & PUBLIC ENGAGEMENT

GCS believes in engaging employees, parents and other constituents in the work of the district and our schools.

This chart indicates just some of the ways we seek input and advice from the people who work in, use support and benefit from our public schools.

Flowcharts

Who distributes the information



The GCS Reconnect, [Reopen and Stay Safe](#) website serves as the hub for all COVID-19 related communications. Please check here first for the most current and updated information.