



# EMBEDDING A DISCOVERY VIDEO INTO POWERPOINT

Smith High School

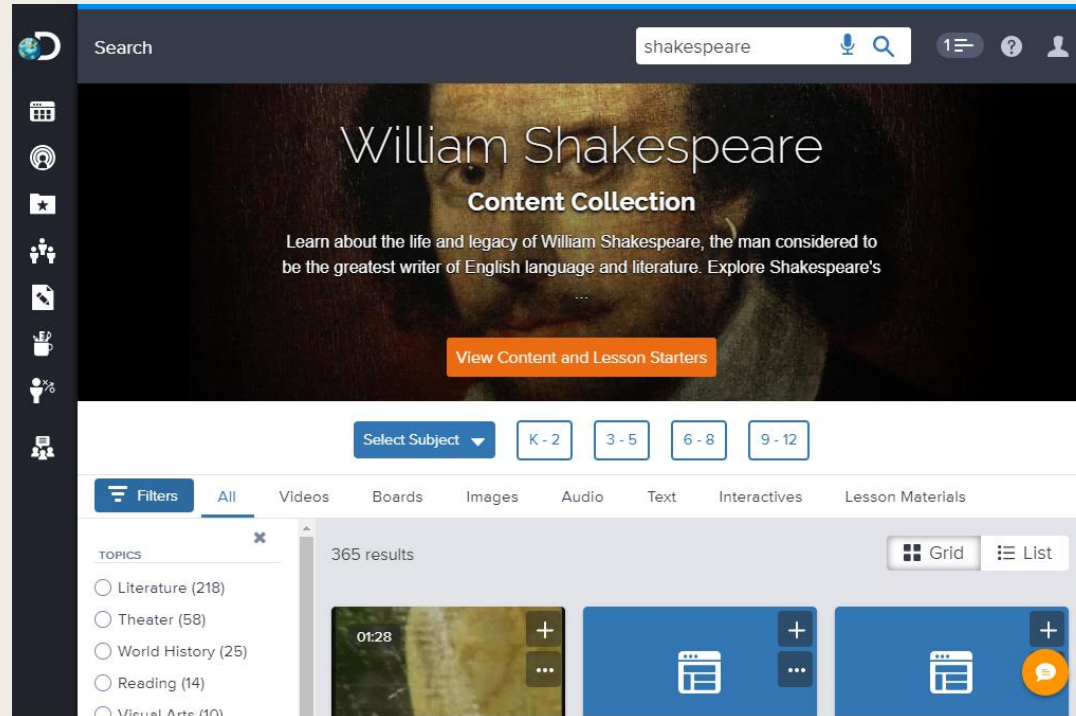
# 1. Instructions

- 1. Begin at <https://gcsnc.discoveryeducation.com/>

- . A screenshot of a web browser displaying the Discovery Education website. The browser's address bar shows the URL "https://gcsnc.discoveryeducation.com/". The website's header includes a "My DE" logo, a search bar, and navigation icons. The main content area features a large banner for "Shakespeare 400 Virtual Field Trip" with the text "Celebrate the life and legacy of William Shakespeare, the greatest writer of English language and literature." and an orange "View Virtual Field Trip" button. Below the banner, there is a user profile for "Desiree Corbett, teacher at SMITH HIGH SCHOOL" and a "PROFESSIONAL LEARNING" banner with the text "Your digital journey continues here. Learn more!" and a right-pointing arrow. The left sidebar contains various navigation icons.

# Instructions

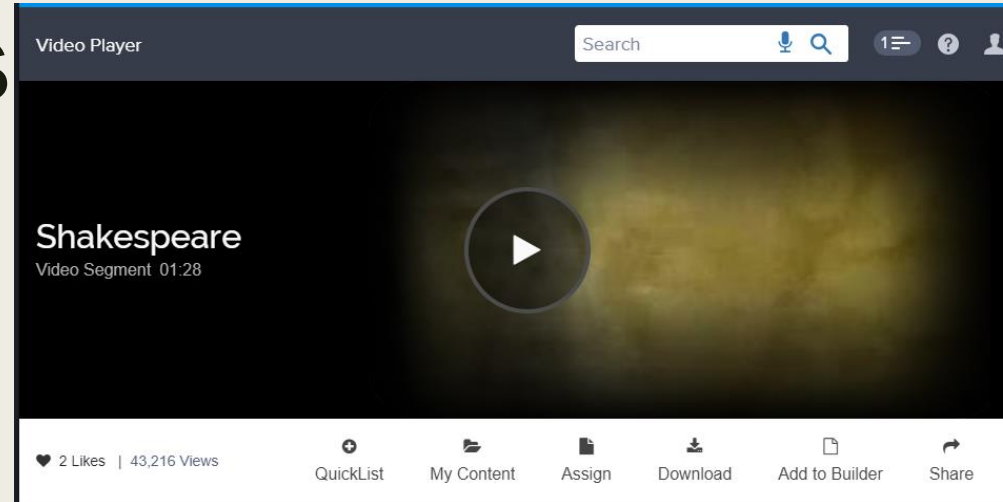
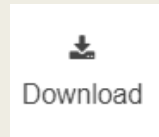
- 2. Search for a video on the topic you wish to embed into your PowerPoint.



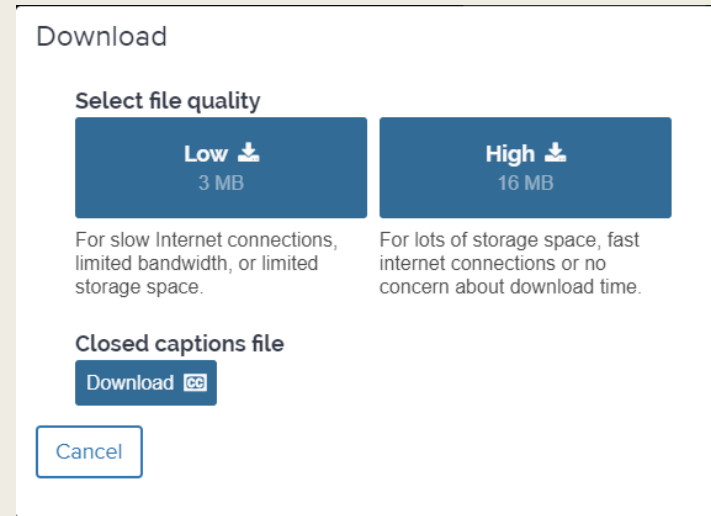
- Narrow search results by changing the filter to Videos.

## 2. Instructions

- 3. Click the download button.

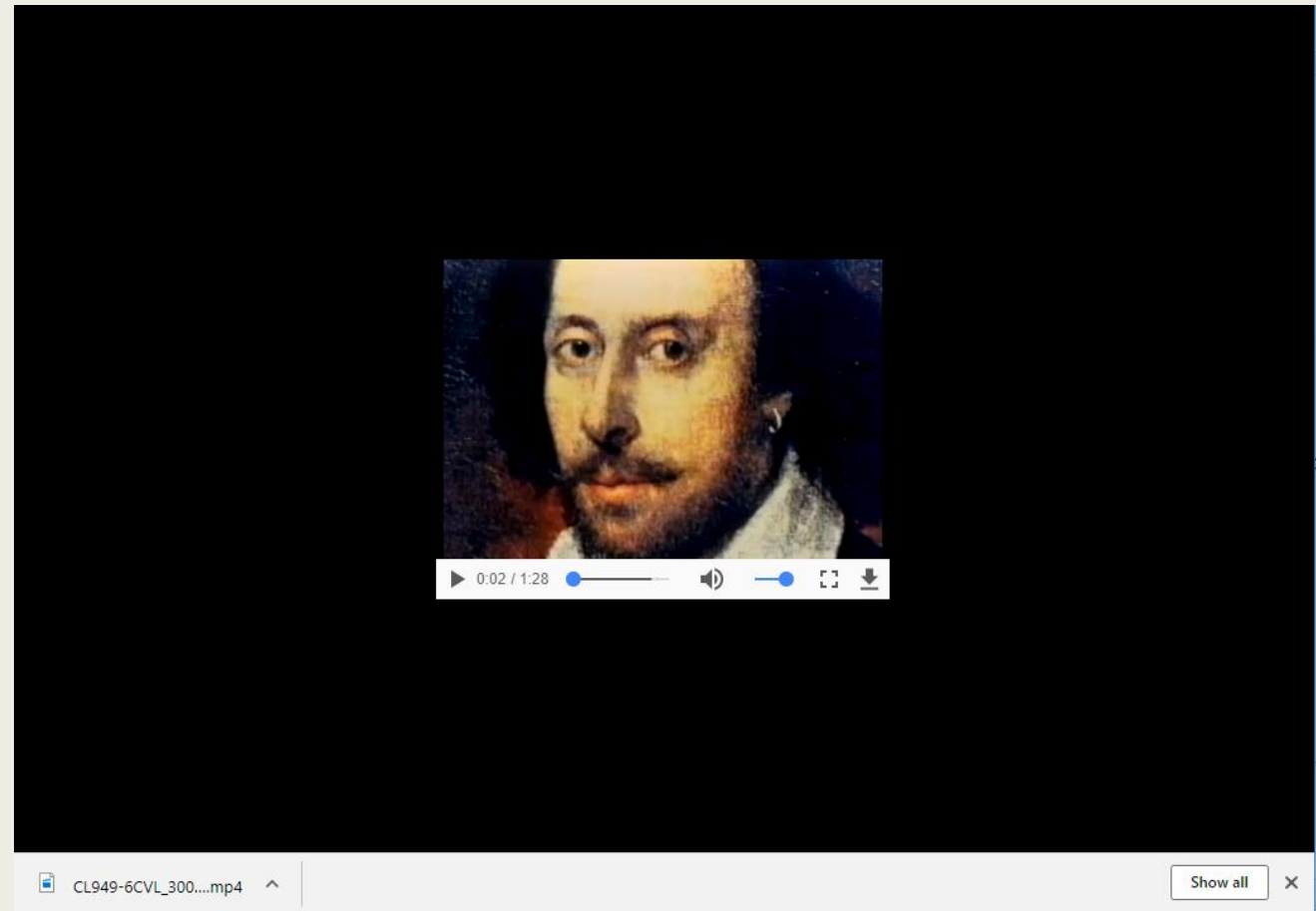


- 4. Select a video speed (**select Low**).  
The video will open in a new tab.



# 3. Instructions

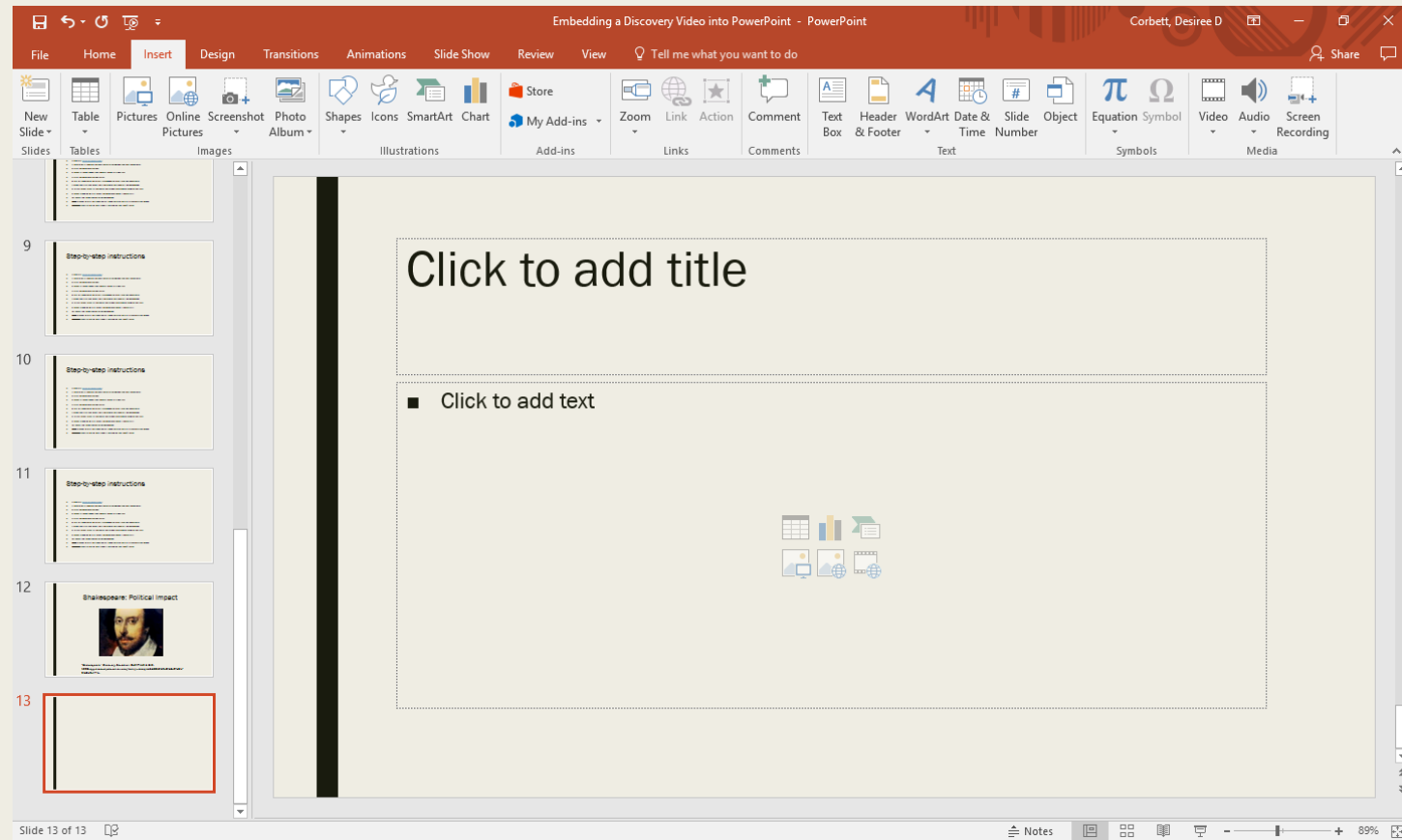
- The video will open in a new tab.
- 5. Click the download button again.
- 6. This will download the actual file needed to insert into the PowerPoint.



File Download

# 4. Instructions

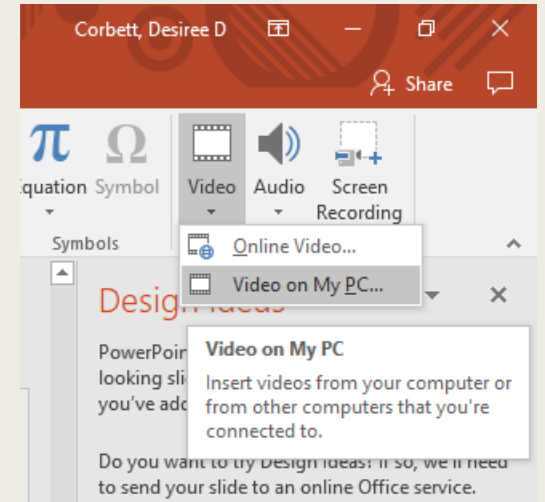
- 7. Open your PPT and select the slide where the video will be embedded.



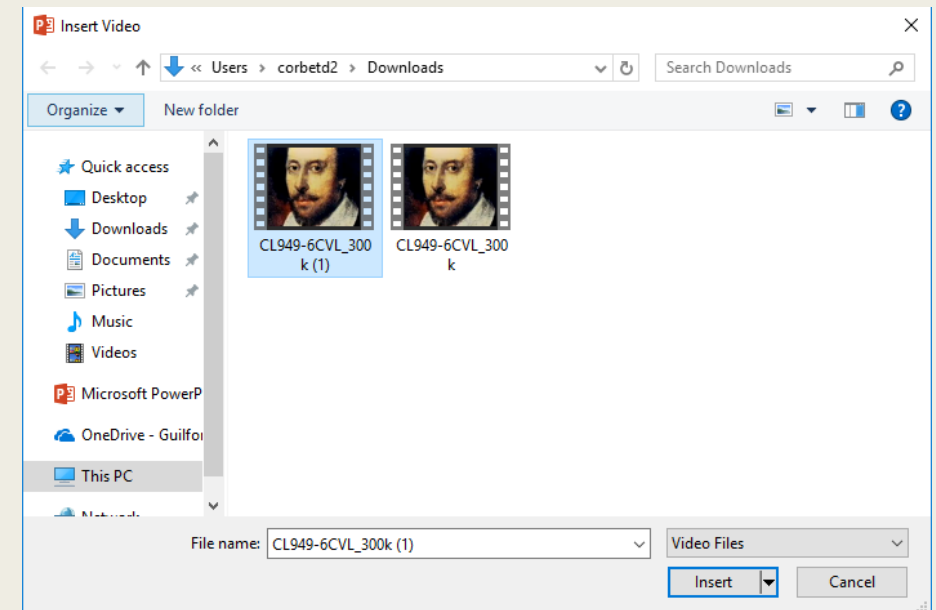
- 8. In PPT, select insert at the top of the screen and choose Video to the right.

# 5. Instructions

- 9. Select Video on my PC (select the download folder if necessary).



- 10. Select the video chosen to be embedded.



Video is Imbedded!  
However, it needs to be **cited!**

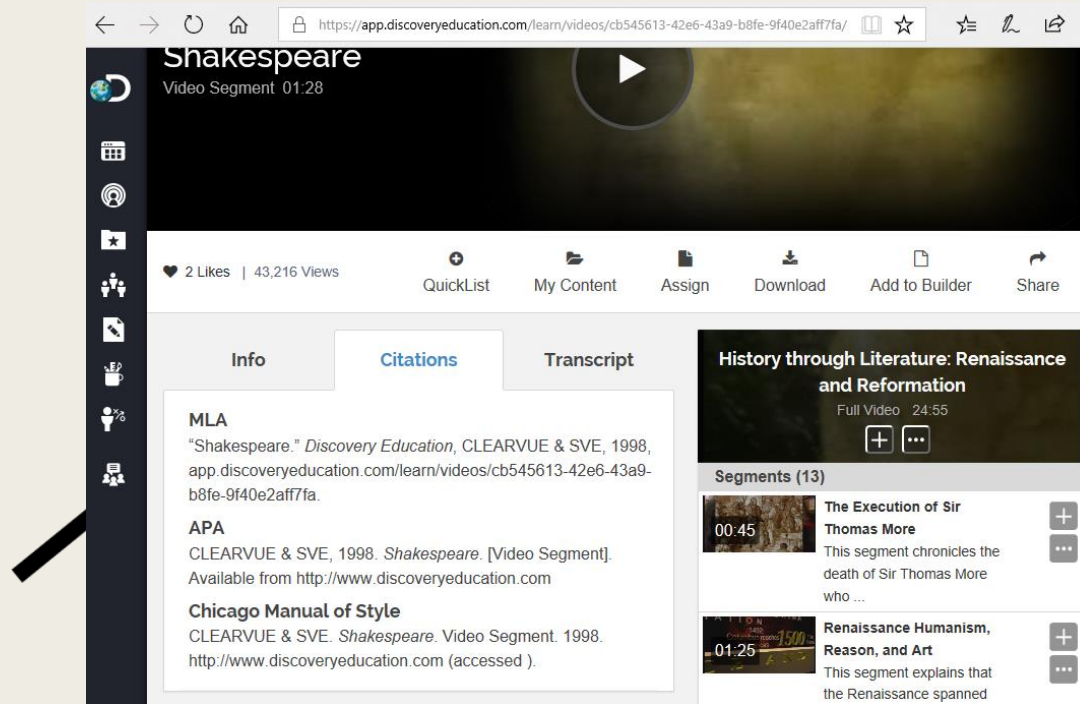
Click to add title





# Citations and Notes

- Citations: The citation for your video is located on the video's page.



The screenshot shows a web browser window displaying a video player interface. The video title is "Shakespeare" and it is a "Video Segment" of 01:28. The interface includes a navigation bar with icons for home, back, forward, and refresh. Below the video player, there are statistics: "2 Likes" and "43,216 Views". A toolbar contains icons for "QuickList", "My Content", "Assign", "Download", "Add to Builder", and "Share". The main content area is divided into three tabs: "Info", "Citations", and "Transcript". The "Citations" tab is active, showing three citation styles: MLA, APA, and Chicago Manual of Style. The MLA citation is: "Shakespeare." *Discovery Education*, CLEARVUE & SVE, 1998, app.discoveryeducation.com/learn/videos/cb545613-42e6-43a9-b8fe-9f40e2aff7fa/. The APA citation is: CLEARVUE & SVE, 1998. *Shakespeare*. [Video Segment]. Available from http://www.discoveryeducation.com. The Chicago Manual of Style citation is: CLEARVUE & SVE. *Shakespeare*. Video Segment. 1998. http://www.discoveryeducation.com (accessed ). To the right of the citations, there is a section for "History through Literature: Renaissance and Reformation" with a "Full Video" of 24:55. Below this, there are "Segments (13)" listed, including "The Execution of Sir Thomas More" (00:45) and "Renaissance Humanism, Reason, and Art" (01:25).

- Note: In order to play the video you will need to have the PPT in presentation mode.

# Shakespeare: Political Impact



“Shakespeare.” *Discovery Education*, CLEARVUE & SVE, 1998, [app.discoveryeducation.com/learn/videos/cb545613-42e6-43a9-b8fe-9f40e2aff7fa](http://app.discoveryeducation.com/learn/videos/cb545613-42e6-43a9-b8fe-9f40e2aff7fa).